

Light data

Luminous flux
2x300 lm

Tunable white
2,200–4,000 K

Beam angle
45°

Dimming
0.1–100 %

Ra
90

SDCM
3

L70/B50
60,000 h
Ta 35 °C

Light source
LED (non replaceable)

Technical data

IP rating
IP45

Protection class
Class I

Impact resistance
IK06

Protection
Overtemperature protection

Permissible ambient
temperature
-25 to +35 °C

Battery backup
Battery life up to 10 years

Maximum power
consumption
8.3 W (2x4.15 W)

Energy efficiency class
F

Mains electricity
230 V~ 50 Hz

Power factor (PF)
0.9

Standby power
Pno: N/A
Psb, Pnet: 0.11 W

Maximum bypass current
16 A

Cable area
0.75–2.5 mm²

Corrosion class
C4 (10+ years)

Radio

2.4 GHz mesh
Bluetooth®
<10 dBm

The Plejd mesh technology extends the range by allowing the units to communicate with each other.

RISK OF INJURY TO PERSON OR PROPERTY

All work on the appliance must be carried out by an authorized electrician. National laws and regulations must be followed.

Declaration of conformity

Hereby, Plejd AB declares that the radio equipment type OUT-01 is in compliance with Directive 2014/53/EU.

The full text of the EU declaration of conformity and third party licenses are available at the following internet address: plejd.com/compliance

Support

In the event of any technical questions, please contact our customer service: support@plejd.com | +46 (0) 10 203 89 91

Plejd AB, Krokslätts Fabriker 27A
431 37 Mölndal, Sweden



Important information

Do not use the product if it has visible signs of damage.

The light source of this luminaire is not replaceable. When the light source reaches its end of life, the whole luminaire shall be replaced.



Disposal and recycling

This electrical product should not be disposed of together with other household waste. Contact your local recycling center for guidance on electrical and electronic equipment disposal.

EN

Plejd

OUT-01 INSTALLATION MANUAL



Further information can be found in the Plejd app or at plejd.com

NOTE! Do not wire to dimmer.

Dimmer is built-in.

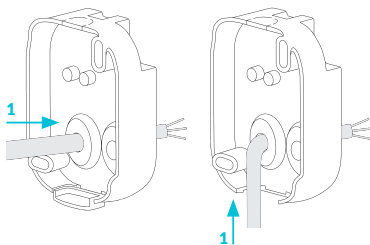
Turn off the power before installing OUT-01.



Do not cut cable grommet.
The IP rating is only valid when it is undamaged.

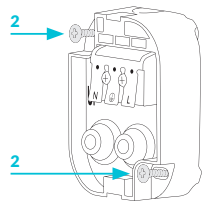
Install the product

Step 1. Push the cable through the grommet. The cable can be routed from the house wall directly behind the wall fastener or underneath it by removing the bottom tab.



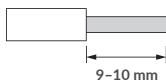
Step 2. Mount the wall bracket with screws suitable for the exterior wall (screws not included). See image on the next page for distance between mounting holes.

The arrow above "UP" in the luminaire should point upwards. The IP rating is only valid when the wall bracket is installed in the correct direction.



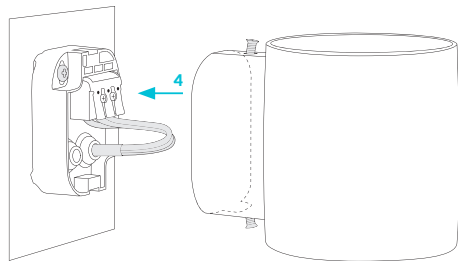
Step 3. Connect the cables to the terminal block.

Connect Live (L), Neutral (N), and Ground (⊖) according to the markings. (Do not wire to dimmer.)

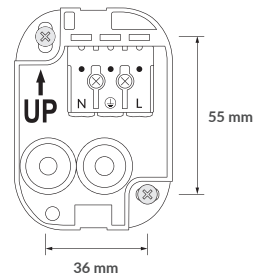


Step 4. Press the luminaire onto the wall bracket.

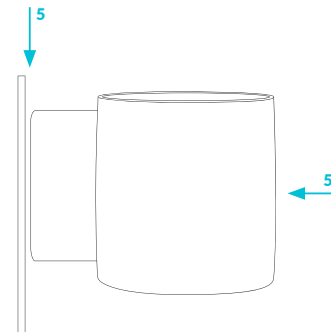
The opening for cable in the bottom of the luminaire should be downwards, and the pins in the luminaire should be upwards.



Distance between holes



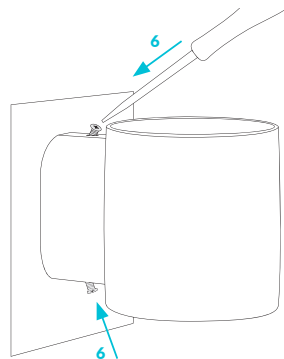
Step 5. Continue pressing the luminaire against the wall. The distance from the wall when OUT-01 is mounted is 1.5 mm.





Follow the instructions in the app

Download the Plejd app on the App Store or Google Play. Use the app to complete the installation and group your light fixtures. Setup requires Bluetooth® and an internet connection.

Step 6. Secure it with two screws, one at the top and one at the bottom. The screws are slightly angled from the wall for easy access. Make sure that OUT-01 is secured properly before you finish the installation.



Hand over the Plejd system

Once you have completed the installation, you will find the system code in the app. Write the code on the included sticker . Place the sticker in the distribution box and give the welcome folder  to the customer.