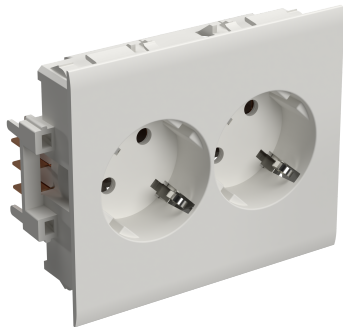


# Socket outlet 2-way extension white 9003

Reference STA501010



Activity	Installation systems
Product family	Wiring devices
Brand	Stago
Range	WGX-W

## Base

Activity	Installation systems
Product family	Wiring devices
Brand	Stago
Range	WGX-W
GTIN	7321679003073

## Commercial and Web

Wiring Device Component Type	W816
Colour	White RAL9003
Short description	Socket outlet 2-way extension white 9003
Medium description	Socket outlet 2-way extension F80 - plastic halogen free - white RAL9003
Length	116 mm
Width	84 mm
Height	43 mm
Material	Plastic

## ETIM (EC000125-Socket outlet)

Model (EF000010)	EV024206
Protective contact (EF001033)	*
Protective earth pin round (EF012000)	*
Number of active pins (round)	4

(EF011998)	
Number of active pins (flat) (EF011999)	0
With signal lamp (EF000198)	No
With built (EF009258)	No
Type of USB power supply (EF015873)	*
Number of units (EF000074)	*
Number of modules (module system) (EF009573)	*
Number of socket outlets switchable (EF008814)	0
Number of phases (EF000351)	1
Imprint/indication (EF003823)	None
Connection type (EF000124)	Other
With hinged lid (EF000117)	No
With enhanced contact protection (EF000389)	Yes
Label space/information surface (EF001035)	No
Colour (EF000007)	White
RAL (EF003882)	9003
Metallic colour (EF015260)	No
Transparent (EF006243)	No
Lockable (EF000113)	No
Eject (EF001051)	No
Insulated mounting (EF001588)	Yes
With function lighting (EF008861)	No
With orientation lighting (EF008862)	No
Over voltage protection (EF001332)	No
Fault current protection (EF001333)	No
With miniature fuse (EF006571)	No
Special power supply (EF001334)	*
Mounting method (EF000003)	Wall duct
Type of fastening (EF002442)	Snap mounting (engagement)
Material (EF002169)	Plastic
Material quality (EF001257)	Thermoplastic
Halogen free (EF000025)	Yes
Surface protection (EF000139)	Untreated
Surface finishing (EF006569)	Matt
Anti (EF023790)	No
With on/off switch (EF000488)	No
With loop through function (EF006604)	No
Rotated central insert (EF001331)	Yes
Nominal current (EF000001)	16 A
Nominal voltage (EF000002)	250 V
Frequency (EF000416)	50 - 50 Hz
Rated fault current (EF002358)	* mA
Suitable for degree of protection (IP) (EF006755)	IP20
Impact strength (EF004293)	*
Device width (EF008808)	116 mm

Device height (EF008809)	84 mm
Device depth (EF008810)	50 mm
Compatible with Apple HomeKit (EF014925)	No
Compatible with Google Assistant (EF014926)	No
Min. depth of built (EF012278)	52 mm
Compatible with Amazon Alexa (EF014927)	No
IFTTT support available (EF011072)	No
For heavy conditions (according to VDE) (EFDE0005)	No

---

## Logistic

Pack 1 type	Bag
Quantity pack 1	1
Weight pack 1	0.16 kg
Length pack 1	116 mm
Width pack 1	84 mm
Height pack 1	43 mm
Pack 2 type	Carton
Quantity pack 2	10
Weight pack 2	2 kg
Length pack 2	290 mm
Width pack 2	240 mm
Height pack 2	90 mm
Pack 3 type	Carton
Quantity pack 3	40
Weight pack 3	8 kg
Length pack 3	395 mm
Width pack 3	260 mm
Height pack 3	310 mm
Pack 4 type	Pallet
Quantity pack 4	720
Weight pack 4	150 kg
Length pack 4	1200 mm
Width pack 4	800 mm
Height pack 4	770 mm
Customs code	85366990
Net weight	0.16 kg
Country of origin	CN

---

## Certification

ETIM class	EC000125
------------	----------

---

## Status product

Product status	Commercialized
----------------	----------------

---

## Environmental

GWP Total A1-A3

1.5036 kgCO<sub>2</sub>e

---

For the latest information check [http://wibe-group.com/cable-support-systems/installation-systems/wiring-devices/socket-outlets\\_wd/socket-outlet-2-w-slave-white\\_1](http://wibe-group.com/cable-support-systems/installation-systems/wiring-devices/socket-outlets_wd/socket-outlet-2-w-slave-white_1)