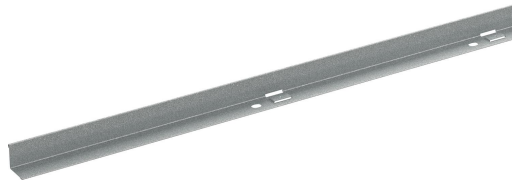


Dividing strip 39/24 1.75m Z+

Reference CSU795932



Activity
Product family
Brand

Cable support systems
Cable trays
Wibe

Base

Activity	Cable support systems
Product family	Cable trays
Brand	Wibe
GTIN	7321677959327

Commercial and Web

Short description	Dividing strip 39/24 1.75m Z+
Medium description	Wibe - dividing strip 39/24 - 1.75m - steel Zinc+
Length	1750 mm
Width	24 mm
Height	24 mm
Material	Steel
Material type or surface treatment	Zinc+
Corrosion class	C4

ETIM (EC001000-Separation plate for cable support system)

Partition height (EF005362)	24 mm
Length (EF001438)	1750 mm
Model (EF000010)	L-profile
Mounting perforation (EF008150)	Yes
Type of fastening (EF002442)	Screw less
Suitable for wire mesh tray (EF005163)	No
Suitable for cable ladder (EF005165)	Yes
Suitable for cable tray (EF005166)	Yes
Suitable for circuit integrity (EF007806)	No
Material (EF002169)	Steel

Stainless steel, pickled (EF006388)	No
Material quality (EF001257)	Other
Surface protection (EF000139)	Continuously galvanized zinc-aluminium
RAL (EF000116)	*
Colour (EF000007)	*

Logistic

Customs code	73089059
Net weight	0.46 kg
Country of origin	SE

Certification

ETIM class	EC001000
------------	----------

Status product

Product status	Commercialized
----------------	----------------

Environmental

GWP Total A1-A3	1.31 kgCO2e
-----------------	-------------
