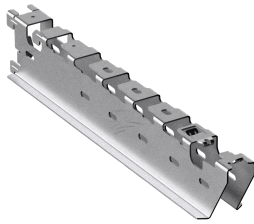


CLX cantilever arm 300 PG

Reference CSU795874



Activity	Cable support systems
Product family	Support system
Brand	Wibe
Range	CLX3

Base

Activity	Cable support systems
Product family	Support system
Brand	Wibe
Range	CLX3
GTIN	7321677958740

Commercial and Web

Short description	CLX cantilever arm 300 PG
Medium description	CLX Cantilever arm 300 - steel pre-galvanized
Material	Steel
Material type or surface treatment	Pre-galvanized
Corrosion class	C2

ETIM (EC000022-Bracket for cable support system)

Length (EF001438)	49 mm
Width (EF000008)	380 mm
Height (EF000040)	62 mm
Suitable for cable management system width (EF008339)	300 - 300 mm
Model (EF000010)	Wall- and profile console
Angle (EF005434)	90 - 90 °
Load bearing capacity (EF002918)	* kN
Suitable for circuit integrity (EF007806)	No

Material (EF002169)	Steel
Material quality (EF001257)	*
Surface protection (EF000139)	Continuously galvanized
Colour (EF000007)	*
RAL (EF000116)	*

Logistic

Pack 1 type	Each
Quantity pack 1	1
Weight pack 1	0.605 kg
Length pack 1	49 mm
Width pack 1	381 mm
Height pack 1	62 mm
Customs code	73089059
Net weight	0.61 kg
Country of origin	SE

Certification

ETIM class	EC000022
------------	----------

Status product

Product status	Commercialized
----------------	----------------

Environmental

GWP Total A1-A3	1.718 kgCO2e
-----------------	--------------
