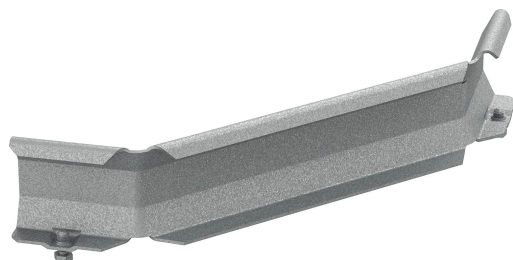


# Junction coupling 14 PG

Reference 723212



Activity  
Product family  
Brand

Cable support systems  
Cable ladders  
Wibe

## Base

|                |                       |
|----------------|-----------------------|
| Activity       | Cable support systems |
| Product family | Cable ladders         |
| Brand          | Wibe                  |
| GTIN           | 7321677232123         |

## Commercial and Web

|                                    |  |
|------------------------------------|--|
| Short description                  | Junction coupling 14 PG                      |
| Medium description                 | Wibe - junction coupling 14 - pre-galvanized |
| Material                           | Steel  |
| Material type or surface treatment | Pre-galvanized                               |
| Environmental corrosion class      | C2   |

## ETIM (EC002413-Connector for cable support system)

|  |                 |
|--|-----------------|
| Model (EF000010)                                       | Corner joint    |
| Hinged joint horizontal (EF006392)                     | No              |
| Hinged joint vertical (EF006393)                       | No              |
| Type of connection (EF000064)                          | Screw connector |
| Suitable for wire mesh tray (EF005163)                 | No              |
| Suitable for cable ladder (EF005165)                   | Yes             |
| Suitable for cable tray (EF005166)                     | No              |
| Suitable for cable management system width (EF008339)  | 150 - 1000 mm   |
| Suitable for cable management system height (EF006391) | 55 mm           |
| Suitable for mesh cable tray filament (EF005164)       | - mm            |

|   |                         |
|---|-------------------------|
| Length (EF001438)                         | 350 mm                  |
| Suitable for circuit integrity (EF007806) | No                      |
| Material (EF002169)                       | Steel                   |
| Stainless steel, pickled (EF006388)       | No                      |
| Material quality (EF001257)               | *                       |
| Surface protection (EF000139)             | Continuously galvanized |
| Colour (EF000007)                         | *                       |
| RAL (EF000116)                            | *                       |

---

## Logistic

|                   |                |
|-------------------|----------------|
| Pack 1 type       | Each           |
| Quantity pack 1   | 1              |
| Weight pack 1     | 0.5 kg         |
| Length pack 1     | 350 mm         |
| Width pack 1      | 90 mm          |
| Height pack 1     | 70 mm          |
| Pack 4 type       | Pallet         |
| Quantity pack 4   | 200            |
| Weight pack 4     | 128 kg         |
| Length pack 4     | 1200 mm        |
| Width pack 4      | 800 mm         |
| Height pack 4     | 340 mm         |
| GTIN pack 4       | 77321677232122 |
| Customs code      | 73089059       |
| Net weight        | 0.5 kg         |
| Country of origin | SE             |

---

## Certification

|            |          |
|------------|----------|
| ETIM class | EC002413 |
|------------|----------|

---

## Status product

|                |                |
|----------------|----------------|
| Product status | Commercialized |
|----------------|----------------|

---

## Environmental

|                 |             |
|-----------------|-------------|
| GWP Total A1-A3 | 1.42 kgCO2e |
|-----------------|-------------|

---

For the latest information check <http://wibe-group.com/cable-support-systems/cable-ladders/accessories/branch-coupling-14-pre-galv>