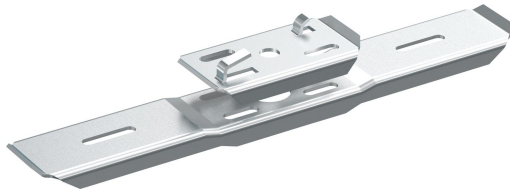


# Support hook B39/320-422 AISI316L

Reference 1149318



Activity	Cable support systems
Product family	Support system
Brand	Defem
Range	Defem

## Base

Activity	Cable support systems
Product family	Support system
Brand	Defem
Range	Defem
GTIN	7332227013185

## Commercial and Web

Short description	Support hook B39/320-422 AISI316L
Medium description	Defem - support hook B39/320-422 - stainless steel AISI316L
Material	Stainless steel
Material type or surface treatment	AISI316L
Environmental corrosion class	CX

## ETIM (EC000022-Bracket for cable support system)

Length (EF001438)	290 mm
Width (EF000008)	49 mm
Height (EF000040)	25 mm
Suitable for cable management system width (EF008339)	320 - 422 mm
Model (EF000010)	Suspended
Angle (EF005434)	* °
Load bearing capacity (EF002918)	1245 kN
Suitable for circuit integrity (EF007806)	No
Material (EF002169)	Stainless steel
Material quality (EF001257)	Rustproof and acidproof steel
Surface protection (EF000139)	*

Colour (EF000007)	*
RAL (EF000116)	*

---

## Logistic

Pack 1 type	Each
Quantity pack 1	1
Weight pack 1	0.56 kg
Length pack 1	285 mm
Width pack 1	50 mm
Height pack 1	25 mm
Customs code	73089098
Net weight	0.31 kg
Country of origin	SE

---

## Certification

ETIM class	EC000022
------------	----------

---

## Status product

Product status	Commercialized
----------------	----------------

---

## Environmental

GWP Total A1-A3	1.83376 kgCO2e
-----------------	----------------

---

For the latest information check <http://wibe-group.com/cable-support-systems/mesh-trays/cantilevers-and-central-suspension-brackets/support-hook-b39-320-422-ss316l>