
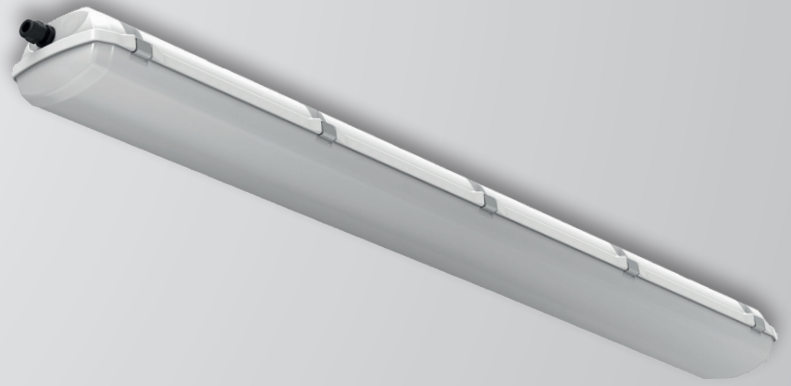


EXTRA-N-LED-2/21

IP 66 /  ZONE 2/21



OUTDOOR

Possibility to use in outdoor unprotected areas

FTZÚ 24 ATEX 0020X



Application: Robust explosion-proof linear luminaire designed for lighting of hazardous areas ATEX ZONE 2/21. The lighting fixture is certified by FTZU Ostrava-Radvanice (certificate type FTZÚ 24 ATEX 0020X). Robust housing made of high quality polycarbonate (RAL7035) with EPDM sealing to allow use in unprotected outdoor areas. Diffuser made from opal polycarbonate for homogenous illumination and excellent glare limitation. High quality electronic components guarantee high efficiency up to 155 lm/W and extremely long lifetime 100 000 h. Dust and waterproof with an rating IP66 as well as with an impact strength rating of IK10. It can be operated at temperatures -20°C up to +60°C. Stainless steel clips and mounting bracket included as a standard. For surface and suspended mounting.

Driver: EP – electronic 220 – 240 V, 50/60 Hz, 220 – 240 V, 0 Hz DC

Light source: LED, 4000K or 6500K, CRI +80, MacAdam3

Housing: Plastic material PC (polycarbonate), grey colour RAL 7035

Diffuser: PC (polycarbonate), opal PC

Fastening: Surface ceiling or wall mounting by means of two self-locking fastening brackets (standard equipment) or set of wall brackets - angle 45°, pole mounting via set of pole brackets, suspension by means of wire or cable suspenders.

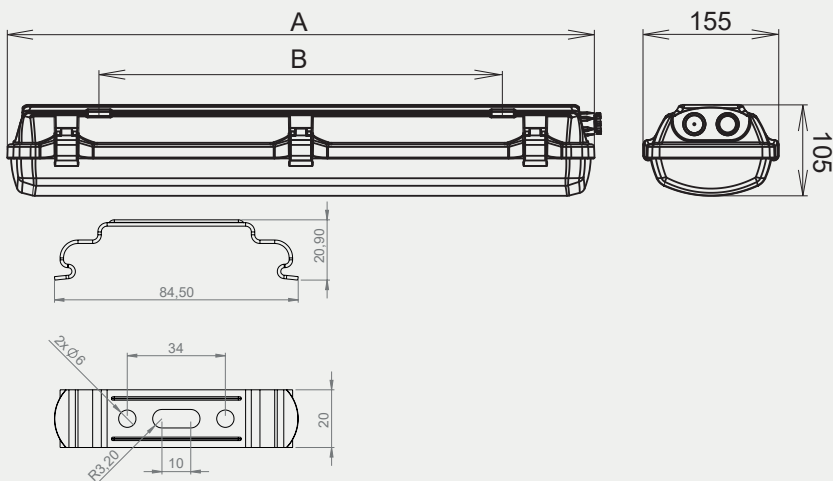
Connection: Screwless three-pole terminal block, maximum diameter of wires 2.5 mm²

Standard equipment: 1pc EX plastic cable gland M20x1.5 (as a standard for diameter of cable 7-12mm), 1 pc EX plastic plug M20x1.5, 2 pcs stainless steel fastening bracket-AISI 304, stainless clips, double cable clip.

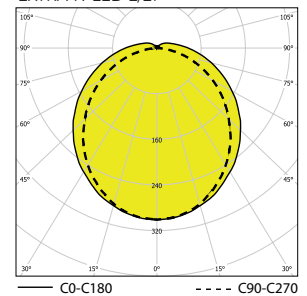
Calculated lifetime – LED modules:

L80B10 Ta30 – 70 000 h

L70B10 Ta 30 – 100 000 h



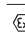

EXTRA-N-LED-2/21



ADVANTAGES:

- Made in Europe - Czech Republic origin
- ATEX certification ZONE 2/21
- Possibility to use in outdoor unprotected areas
- High efficiency up to 155 lm/W
- Luminous flux versions from 1 250 up to 20 000 lm
- Luminous flux up to 16 311 lm

EXTRA-N-LED, MULTIEXTRA-N-LED

-  II 3G Ex nR IIC T6 Gc
-  II 2D Ex tb IIIC T80°C Db

TYPICAL APPLICATIONS:



Factory



Oil & gas



Petrochemical



Pharma & Laboratories



Food & beverages production areas

Order number	Name	Lighting fixture luminous flux (lm)	Power input (W)	Rated power output (lm/W)	Ta max (°C)	Dimensions of lighting fixture A (mm)	Mounting spacing B (mm)	Weight (kg)
4000K								
086300	EXTRA-N-LED-2/21-1250-218-G2-4K, IP66	1171	8	146	45	670	460	1,8
086301	EXTRA-N-LED-2/21-2500-218-G2-4K, IP66	2251	15	150	60	670	460	1,8
086302	EXTRA-N-LED-2/21-5000-218-G2-4K, IP66	4357	29	150	55	670	460	1,7
086303	EXTRA-N-LED-2/21-2500-236-G2-4K, IP66	2251	15	150	60	1280	880	3,1
086304	EXTRA-N-LED-2/21-5000-236-G2-4K, IP66	4503	29	155	60	1280	880	3,1
086305	EXTRA-N-LED-2/21-10000-236-G2-4K, IP66	8715	58	150	40	1280	880	3,2
086306	EXTRA-N-LED-2/21-3750-258-G2-4K, IP66	3377	24	141	55	1580	1000	3,6
086307	EXTRA-N-LED-2/21-7500-258-G2-4K, IP66	6754	44	154	55	1580	1000	3,6
086308	EXTRA-N-LED-2/21-12550-258-G2-4K, IP66	11172	74	151	45	1580	1000	3,8
086309	EXTRA-N-LED-2/21-16700-258-G2-4K, IP66	13730	94	146	40	1580	1000	3,8
086310	EXTRA-N-LED-2/21-20000-258-G2-4K, IP66	16311	115	142	40	1580	1000	3,8
6500K								
086340	EXTRA-N-LED-2/21-1250-218-G2-6.5K, IP66	1171	8	146	45	670	460	1,8
086341	EXTRA-N-LED-2/21-2500-218-G2-6.5K, IP66	2251	15	150	60	670	460	1,8
086342	EXTRA-N-LED-2/21-5000-218-G2-6.5K, IP66	4357	29	150	55	670	460	1,7
086343	EXTRA-N-LED-2/21-2500-236-G2-6.5K, IP66	2251	15	150	60	1280	880	3,1
086344	EXTRA-N-LED-2/21-5000-236-G2-6.5K, IP66	4503	29	155	60	1280	880	3,1
086345	EXTRA-N-LED-2/21-10000-236-G2-6.5K, IP66	8715	58	150	40	1280	880	3,2
086346	EXTRA-N-LED-2/21-3750-258-G2-6.5K, IP66	3377	24	141	55	1580	1000	3,6
086347	EXTRA-N-LED-2/21-7500-258-G2-6.5K, IP66	6754	44	154	55	1580	1000	3,6
086348	EXTRA-N-LED-2/21-12550-258-G2-6.5K, IP66	11172	74	151	45	1580	1000	3,8
086349	EXTRA-N-LED-2/21-16700-258-G2-6.5K, IP66	13730	94	146	40	1580	1000	3,8
086350	EXTRA-N-LED-2/21-20000-258-G2-6.5K, IP66	16311	115	142	40	1580	1000	3,8

Tolerance of luminous flux and power input of the lighting fixture +/- 10%

Accessories on request



Suspended mounting
001696 Wire suspension EXTRA



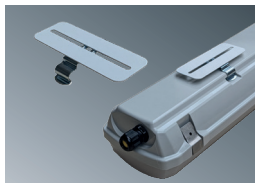
Suspended mounting
051131 Cable suspension-EXTRA-2x (3m)



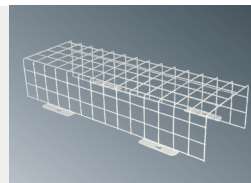
064643 Set of wall brackets - angle 45° EXTRA, AISI304 (2 pcs)



051157 Pole bracket EXTRA (for Ø 50 mm), AISI304 (1ps)



065465 Adjustable fixing brackets EXTRA



001748 LAK Protective cage EXTRA 18W
001749 LAK Protective cage EXTRA 36W
001750 LAK Protective cage EXTRA 58W

Standard accessories M20

008065	Cable gland WISKA EX M20x1.5 ESKE/1-e 20 - black (2,3 Nm)
007047N	Flat sealing ring EPDM 27x18.5x1.5 mm
008090	Plastic sealing plug Ex M20x1.5
008097	Plastic nut WISKA EMUG 20 M20x1.5

Accessories for armoured cable M20

008052	Cable gland BIMED M20x1.5 ORION UNIVERSAL (8+/- 0.5Nm)
008091	Sealing plug WISKA EMVS20 M20x1.5 Ex-nickel-plated brass
008093	Nut WISKA EMMU20 M20x1.5 -nickel-plated brass
007047N	Flat sealing ring EPDM 27x18.5x1.5 mm

Nickel-plated accessories M20

008092	Cable gland WISKA EMSKE20 M20x1.5 Ex-nickel-plated brass (8 Nm)
008093	Nut WISKA EMMU20 M20x1.5 - nickel-plated brass
008091	Sealing plug WISKA EMVS20 M20x1.5 Ex-nickel-plated brass
007047N	Flat sealing ring EPDM 27x18.5x1.5 mm

Lighting fixture detail



Lighting fixtures for areas with danger of explosions

Standard order number	3F	MULTI-1H	MULTI-3H	DALI	DALI 3F
086300	086300 3F 2,5MM2	086322	086329	086311	086311 3F 2,5MM2
086301	086301 3F 2,5MM2	086323	086330	086312	086312 3F 2,5MM2
086302	086302 3F 2,5MM2	X	X	086313	086313 3F 2,5MM2
086303	086303 3F 2,5MM2	086324	086331	086314	086314 3F 2,5MM2
086304	086304 3F 2,5MM2	086325	086332	086315	086315 3F 2,5MM2
086305	086305 3F 2,5MM2		X	086316	086316 3F 2,5MM2
086306	086306 3F 2,5MM2	086326	086333	086317	086317 3F 2,5MM2
086307	086307 3F 2,5MM2	086327	086334	086318	086318 3F 2,5MM2
086308	086308 3F 2,5MM2	086328	086335	086319	086319 3F 2,5MM2
086309	086309 3F 2,5MM2	X	X	086320	086320 3F 2,5MM2
086310	086310 3F 2,5MM2	X	X	086321	086321 3F 2,5MM2
086340	086340 3F 2,5MM2	086362	086369	086351	086351 3F 2,5MM2
086341	086341 3F 2,5MM2	086363	086370	086352	086352 3F 2,5MM2
086342	086342 3F 2,5MM2	X	X	086353	086353 3F 2,5MM2
086343	086343 3F 2,5MM2	086364	086371	086354	086354 3F 2,5MM2
086344	086344 3F 2,5MM2	086365	086372	086355	086355 3F 2,5MM2
086345	086345 3F 2,5MM2	X	X	086356	086356 3F 2,5MM2
086346	086346 3F 2,5MM2	086366	086373	086357	086357 3F 2,5MM2
086347	086347 3F 2,5MM2	086367	086374	086358	086358 3F 2,5MM2
086348	086348 3F 2,5MM2	086368	086375	086359	086359 3F 2,5MM2
086349	086349 3F 2,5MM2	X	X	086360	086360 3F 2,5MM2
086350	086350 3F 2,5MM2	X	X	086361	086361 3F 2,5MM2

Order number	Name	Lighting fixture luminous flux (lm)
MULTI-1H		
086322	MULTIEXTRA-N-LED-2/21-1250-218-G2-4K, IP66, 1h	450
086323	MULTIEXTRA-N-LED-2/21-2500-218-G2-4K, IP66, 1h	450
086324	MULTIEXTRA-N-LED-2/21-2500-236-G2-4K, IP66, 1h	450
086325	MULTIEXTRA-N-LED-2/21-5000-236-G2-4K, IP66, 1h	654
086326	MULTIEXTRA-N-LED-2/21-3750-258-G2-4K, IP66, 1h	654
086327	MULTIEXTRA-N-LED-2/21-7500-258-G2-4K, IP66, 1h	654
086328	MULTIEXTRA-N-LED-2/21-12550-258-G2-4K, IP66, 1h	654
MULTI-3H		
086329	MULTIEXTRA-N-LED-2/21-1250-218-G2-4K, IP66, 3h	450
086330	MULTIEXTRA-N-LED-2/21-2500-218-G2-4K, IP66, 3h	450
086331	MULTIEXTRA-N-LED-2/21-2500-236-G2-4K, IP66, 3h	450
086332	MULTIEXTRA-N-LED-2/21-5000-236-G2-4K, IP66, 3h	654
086333	MULTIEXTRA-N-LED-2/21-3750-258-G2-4K, IP66, 3h	654
086334	MULTIEXTRA-N-LED-2/21-7500-258-G2-4K, IP66, 3h	654
086335	MULTIEXTRA-N-LED-2/21-12550-258-G2-4K, IP66, 3h	654

For 4000K and 6500K the same luminous fluxes apply in emergency mode

On request

DIM – dimmable electronic driver (DALI,DSI, 1-10V)

MULTI-1/3 - maintained emergency lighting is always on (standard luminaire with emergency lighting module)

2700K/3000K/4000K/5000K/6500K - colour temperature

1/3 F - single-phase or three phase through wiring connection 2.5 mm²

Use of lighting fixtures in areas with danger of explosion	Marking of external influences	Area classification	
		Marking	Directive
Danger of explosion of flammable dust	BE3N1	ZONE 21	ČSN EN 60079-14, ČSN EN 60079-10-2
Danger of explosion of flammable gases and vapours	BE3N2	ZONE 2	ČSN EN 60079-14, ČSN EN 60079-10-1