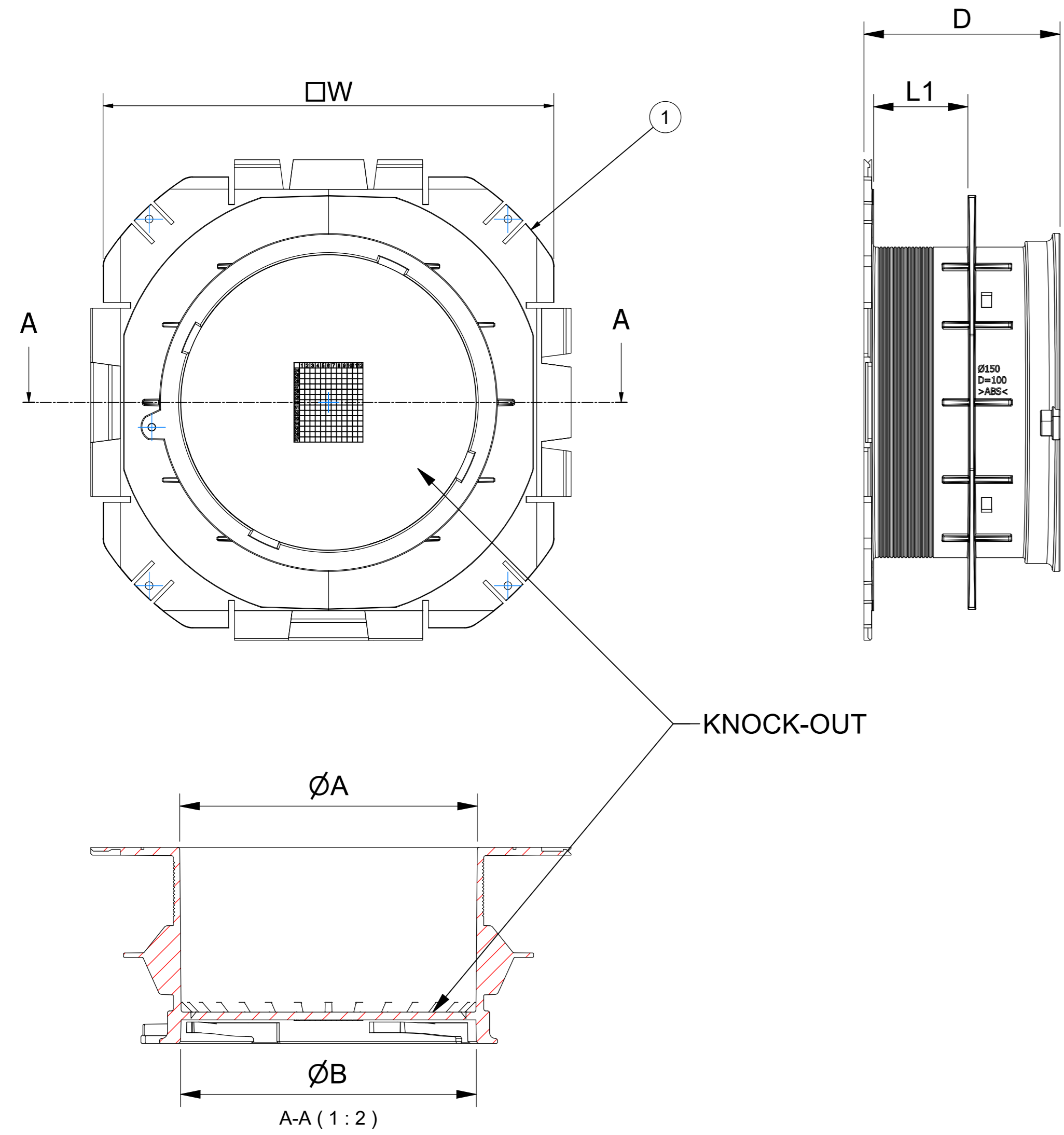
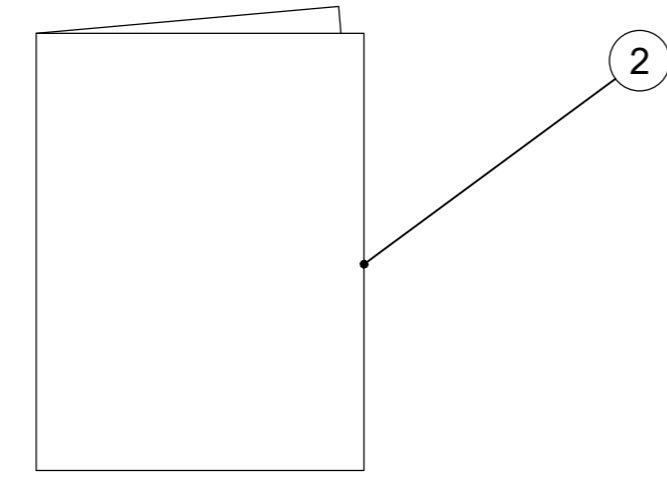
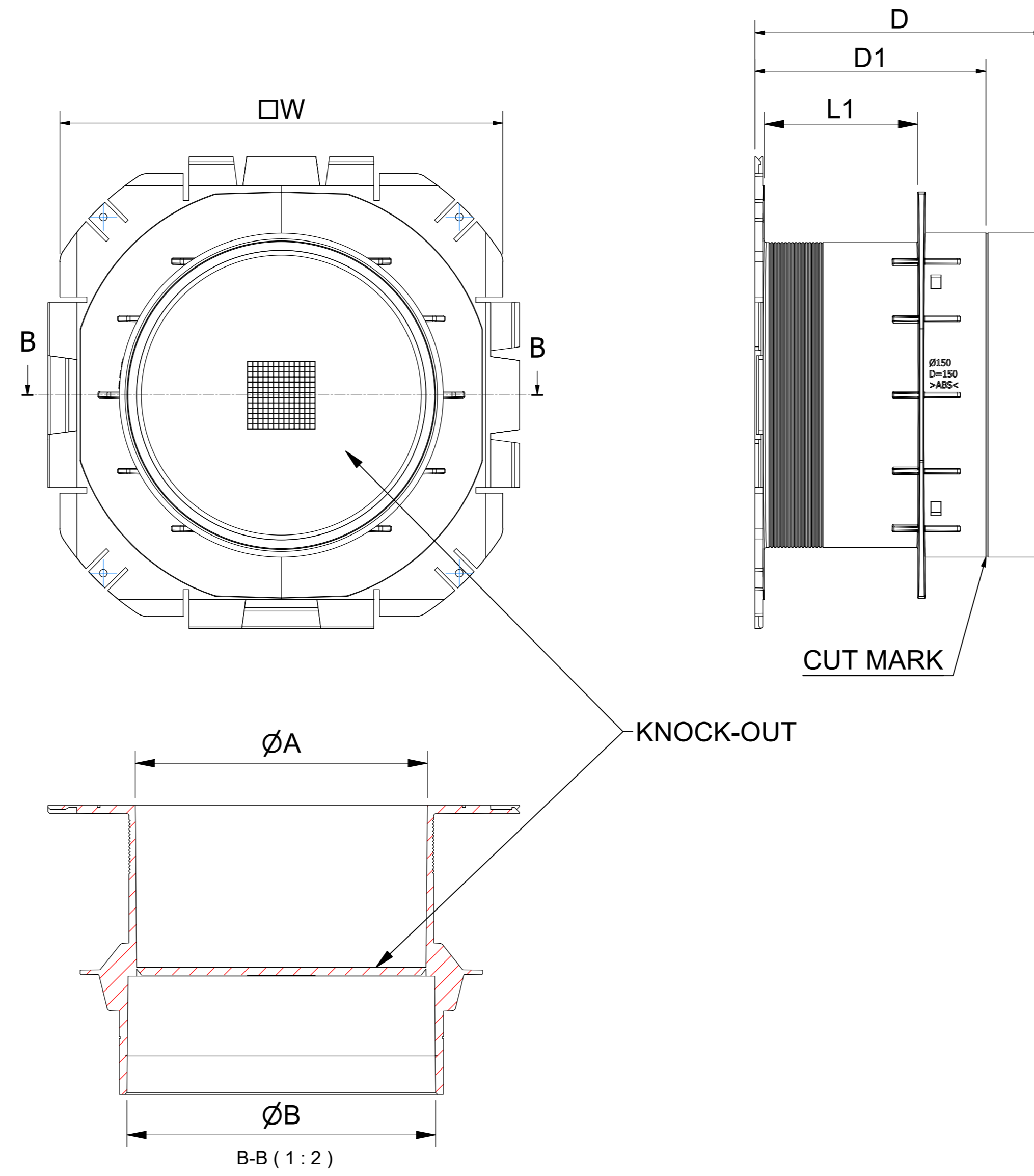
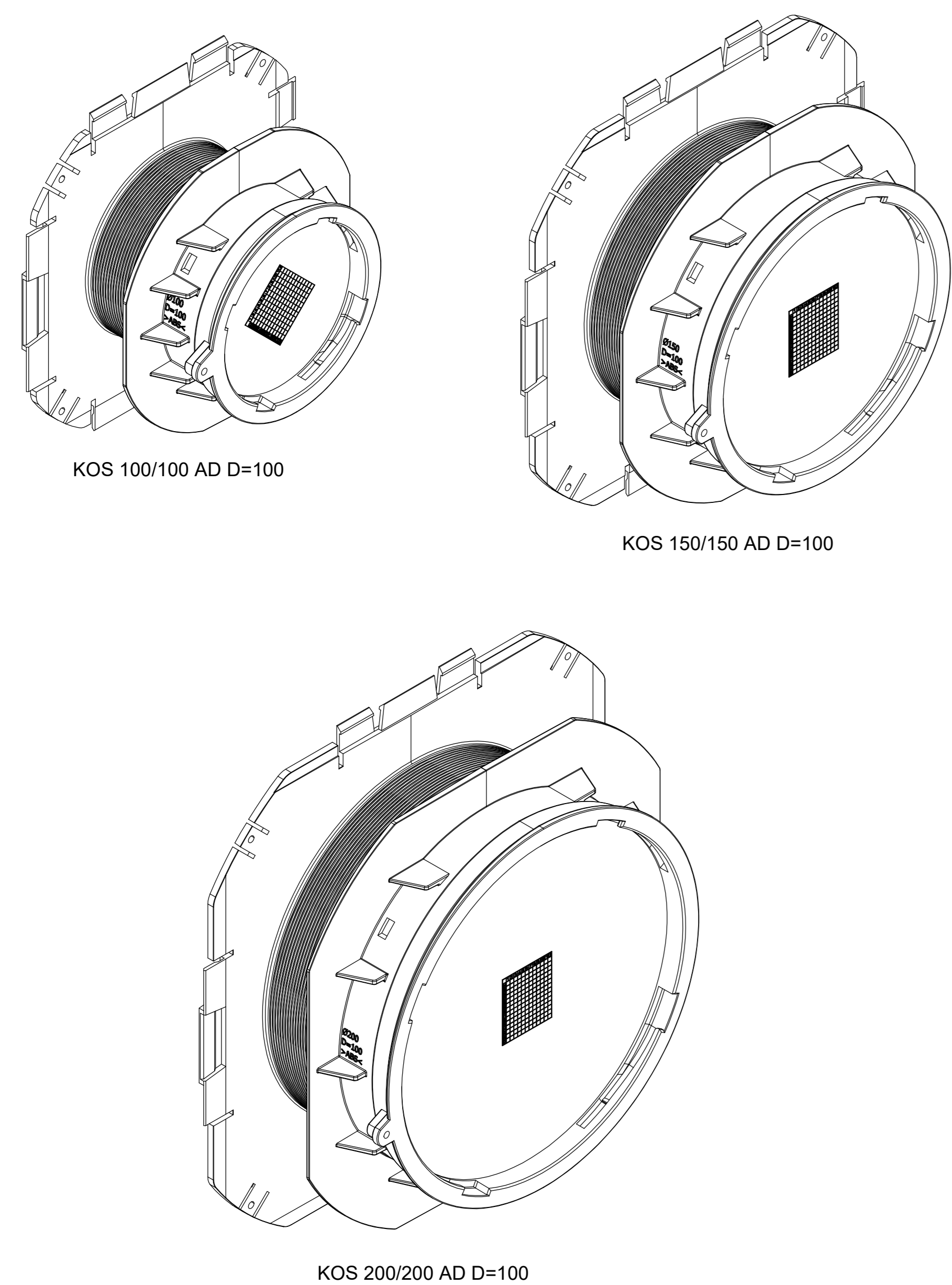


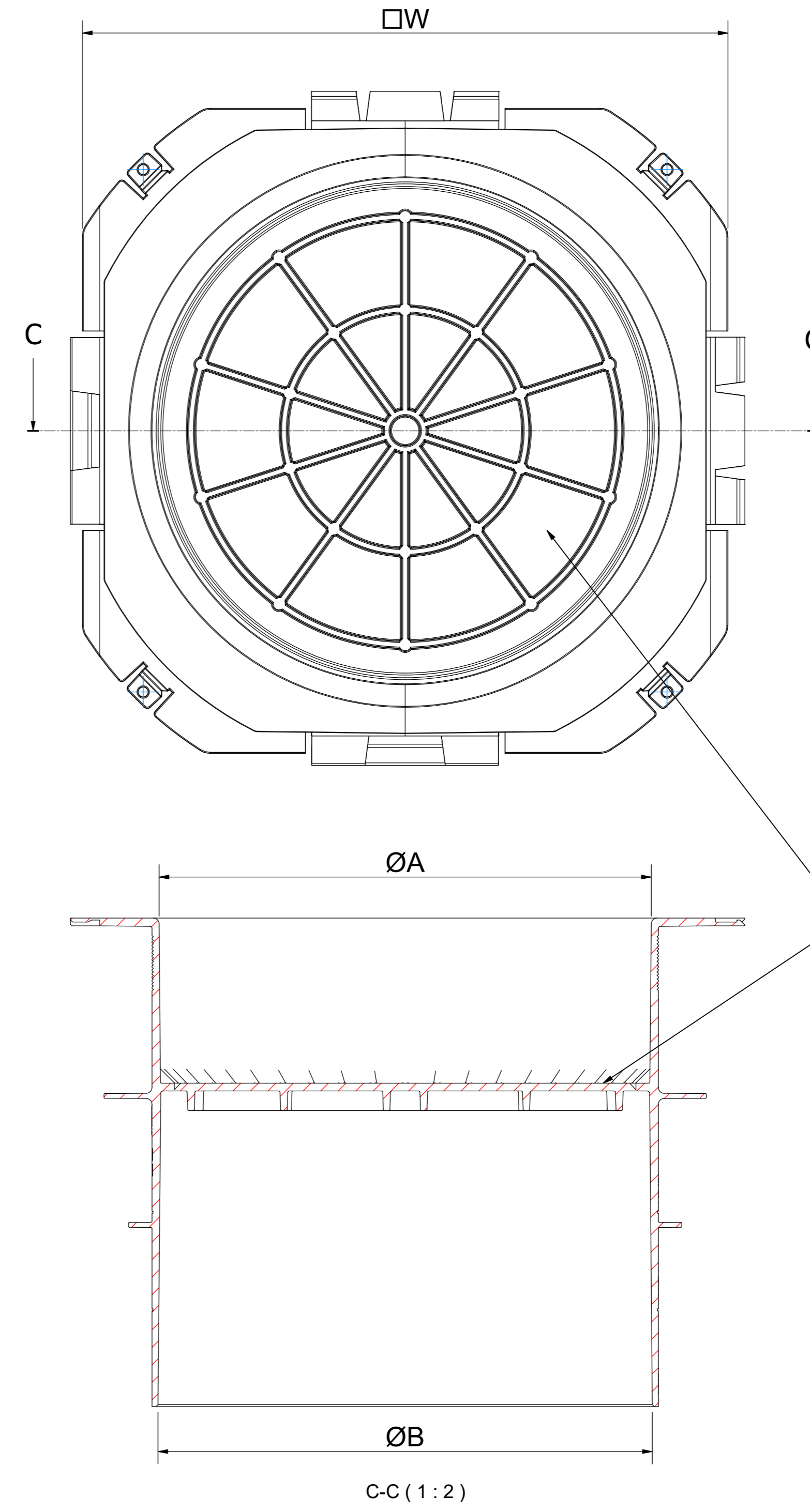
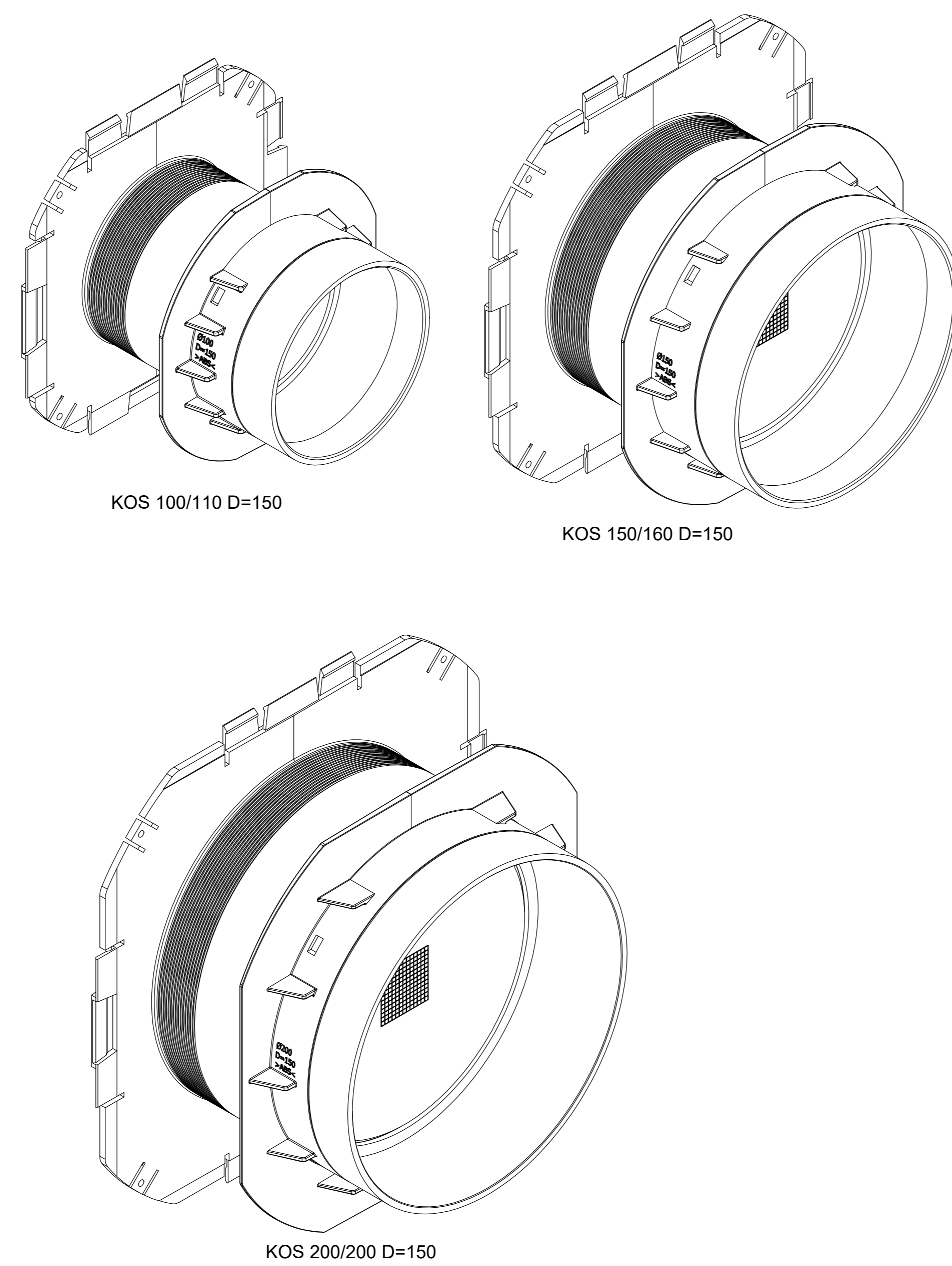
KOS VARIANTS								
SIZE	D (mm)	D1 (mm)	D2 (mm)	W (mm)	ØA (mm)	ØB (mm)	L1 (mm)	L2 (mm)
KOS 100/100 AD D=100	100	-	-	180	102	101	48	-
KOS 100/110 D=150	150	120	-	180	102	111	80	-
KOS 150/150 AD D=100	100	-	-	230	152	151	48	-
KOS 150/160 D=150	150	120	-	230	152	161	80	-
KOS 200/200 AD D=100	100	-	-	280	202	201	48	-
KOS 200/200 D=150	150	120	-	280	202	201	80	-
KOS 250/250 D=250	250	150	200	330	252	251	85	63
KOS 298/315 D=250	250	150	200	395	300	316	81	68



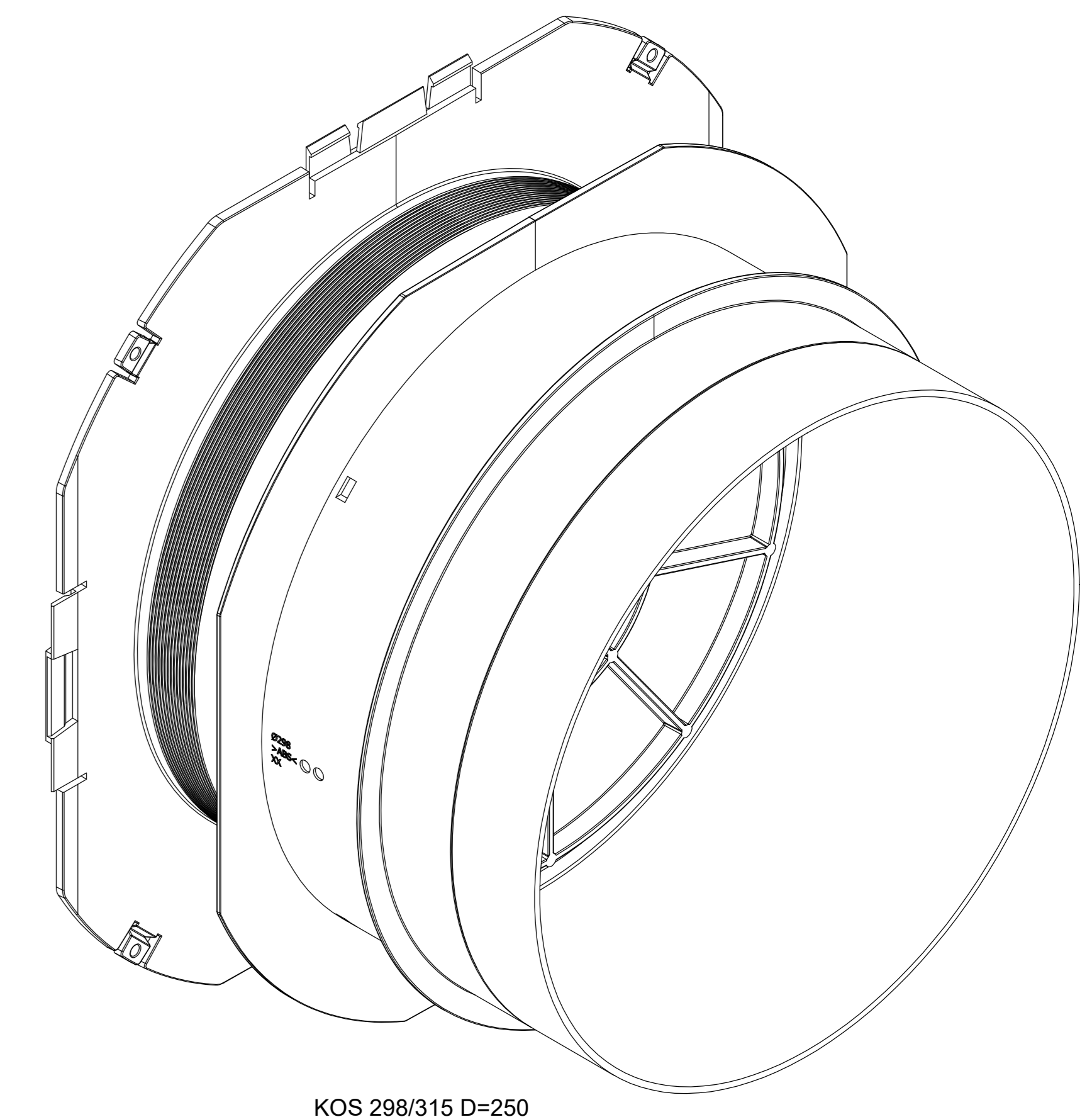
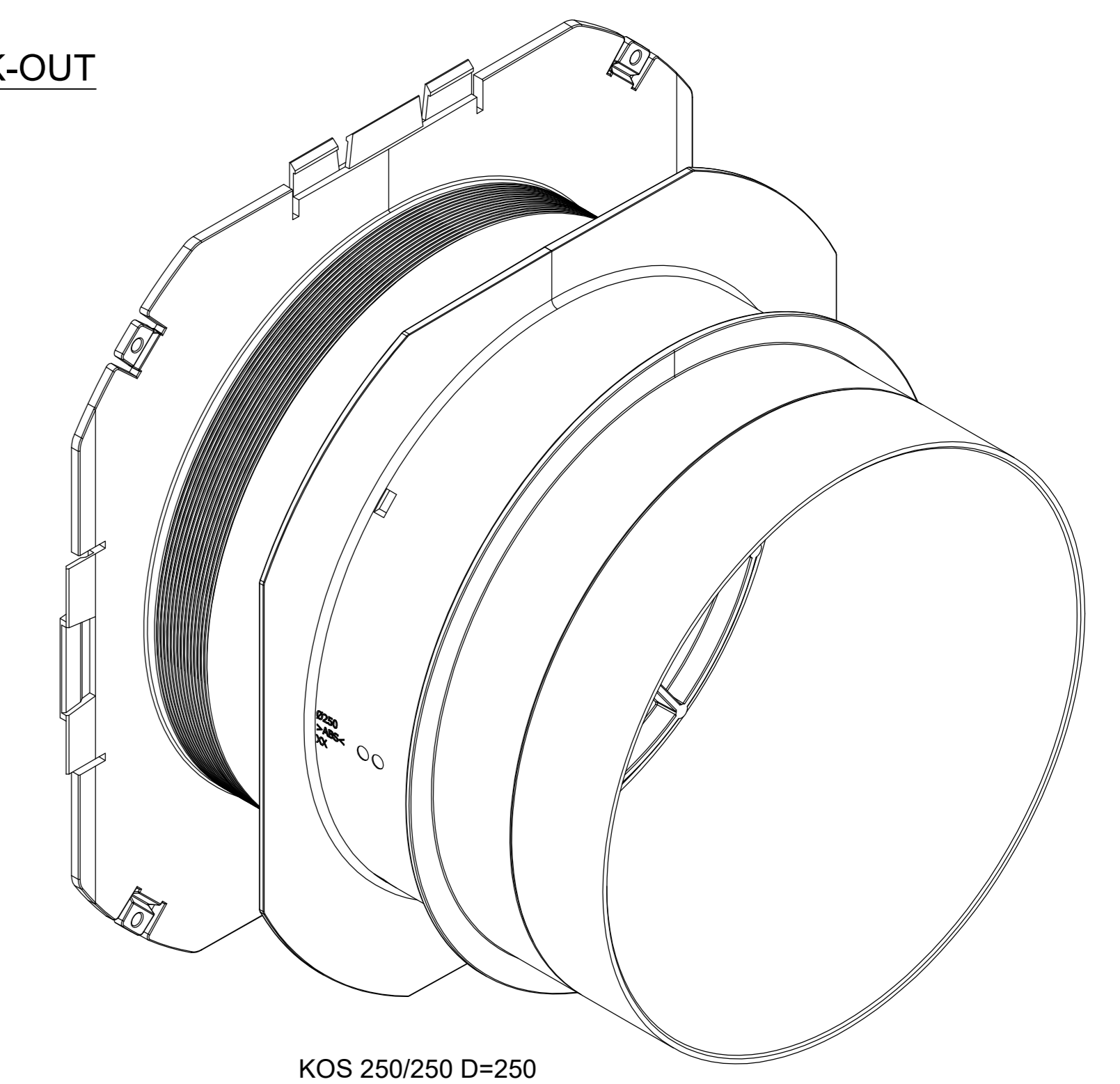
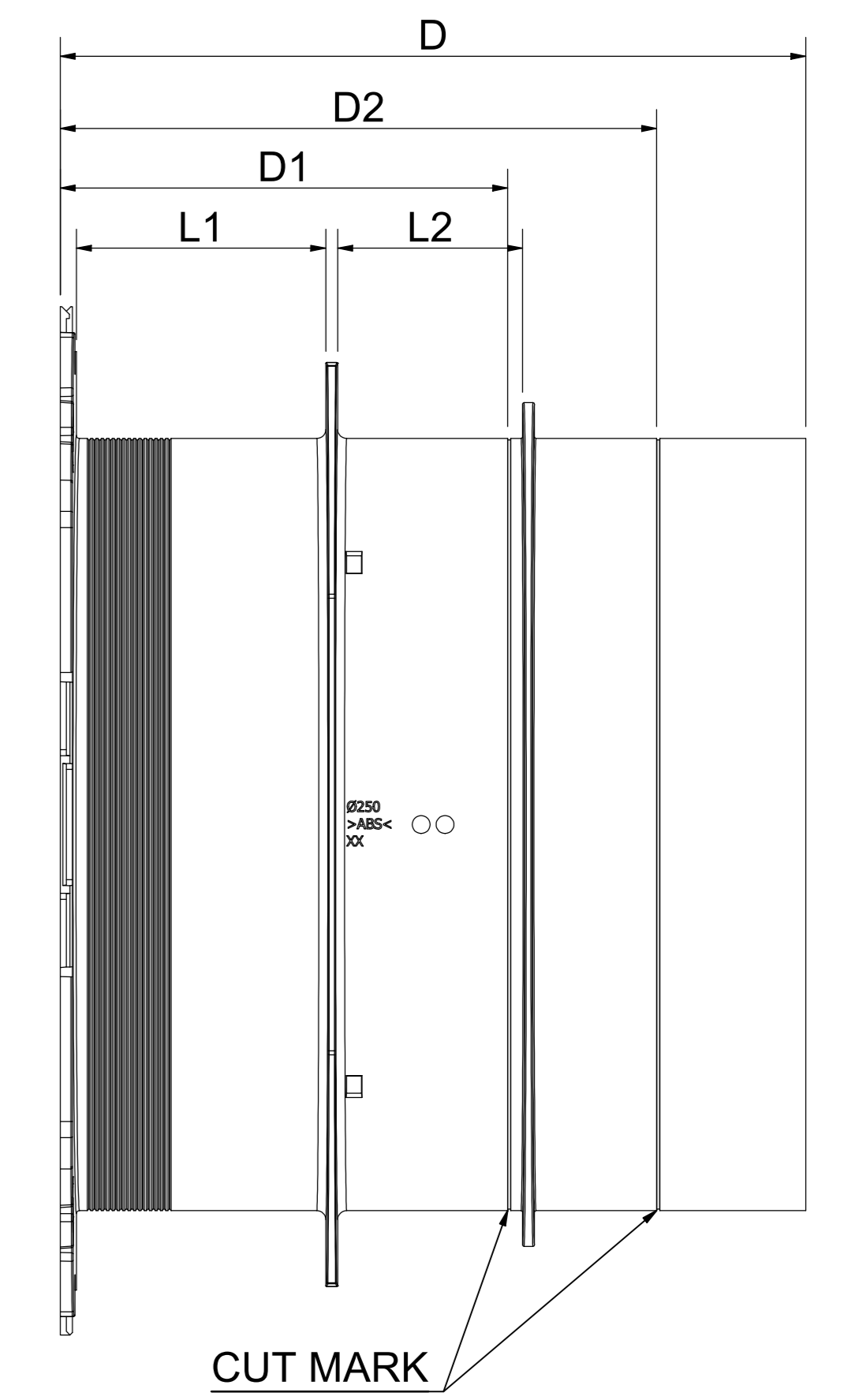
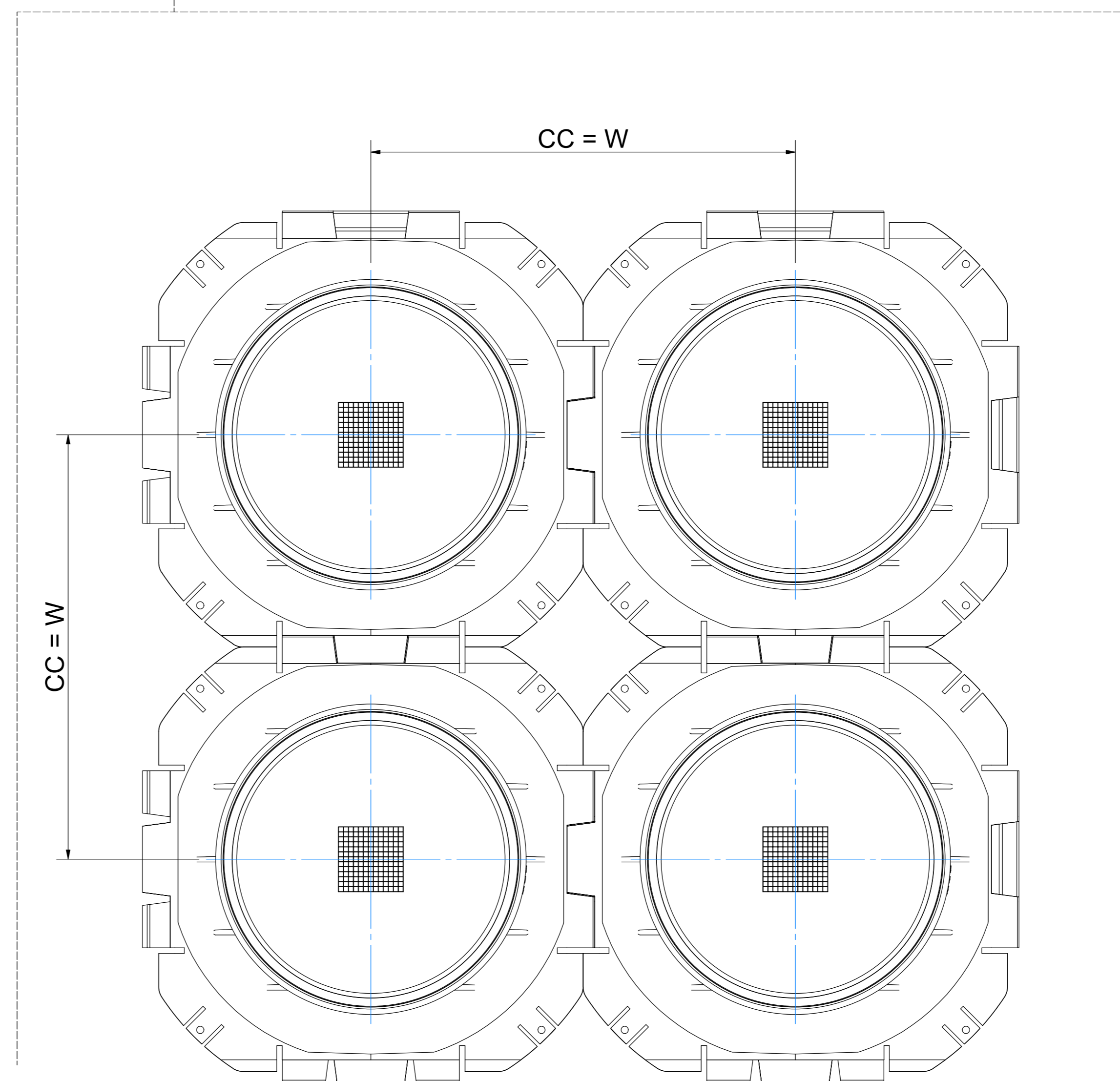
D=100 VARIANTS
CAN BE USED WITH ADAPTER



D=150 VARIANTS



D=250 VARIANTS



KOS 298/315 D=250

2	INSTALLATION INSTRUCTION	ABS	Specification	0.5
1	KOS			
ITEM	QTY	Designation	Material	Weight
		see-robus	2018-03-13	0.3 kg
Date		2025-05-08	AO	1 / 1
File		KOS SLEEVES ASSEMBLY		
www.roxtec.com		Information drawing	Drawing number	S1531134 E

Information drawings show general design and nominal dimensions if not else stated

Rev 3.1
 All rights reserved. No part of this publication may be reproduced, stored in a retrieval system, or transmitted in any form or by any means, electronic, mechanical, photocopying, recording, or by any information storage and retrieval system, without the prior written permission of Roxeltec.