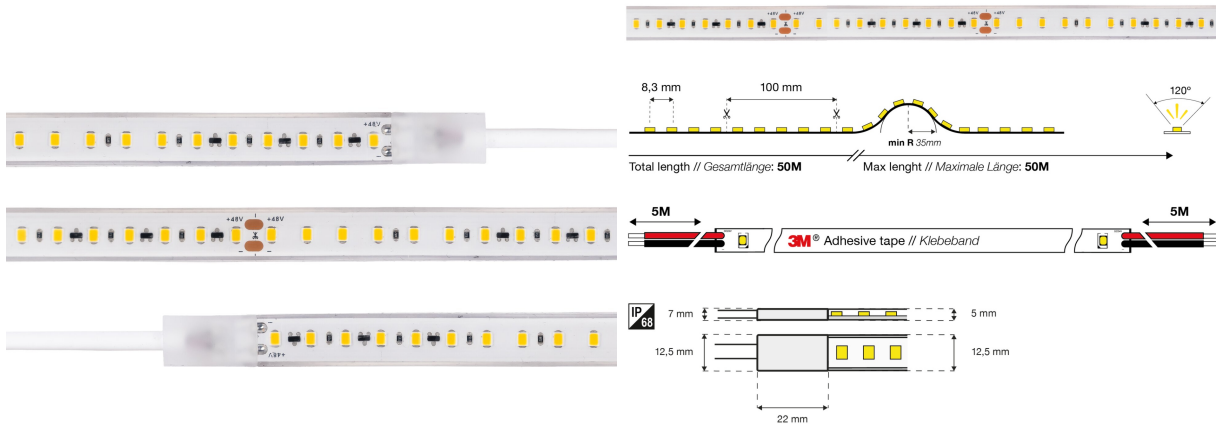


Datasheet | S15000
SLC Infinity

SLC Infinity 6W/m 516lm/m 2700K Ra>90 48V IP68 50m

Robust 48V silicone light strip for demanding environments. Up to 50 m seamless lighting, UV-stable, withstands -20°C , fully potted and IP68 waterproof. Delivered on 50 m reels (IP68) or as custom lengths (IP67). If cut on site, the protection rating becomes IP65.

Electrical

Input	48V
Technology	Constant voltage (CV)
Iso Current Technology (iC)	Yes
Rated power	300 W
Rated power per meter	6 W/m
Control type	48V
Cable type	2 x 0,5 mm ²
Connection	5 m cable in each end
Expected lifetime (25°C)	100 000 hours
Light reduction (25°C)	L70B50
Max length per connection	50 meters
Operating temperature (Ta)	$-20^{\circ}\text{C} \sim +50^{\circ}\text{C}$
Insulation class	Class III
Reverse voltage protection	No

Light technic

Lumens pr. meter	516 lm
Efficacy	78 lm/W
Colour temperature	2700K
Colour rendering (CRI/Ra)	Ra>90
Beam angle fixed	120 °
Number of LEDs per meter	120
Dimmable	Yes, with PWM

Mechanical

IP rating	IP68
IK grade	IK08
Cutting point, every	100 mm
UV-resistant	Yes
Suitable for	Indoor / Outdoor

Dimensions

Height	7 mm
Height excluding feeder	5 mm
PCB width	10 mm
Width	12.5 mm
Width excluding feeder	12.5 mm
LED-Strip length	50 m
Length	50000 mm
Product net weight	5100 g