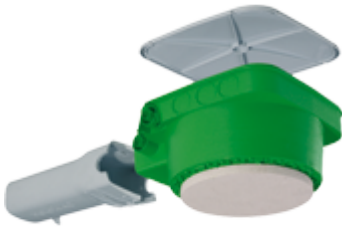


# HaloX-P housing with mineral fibreboard and transformer tunnel



- 3-part
- Transformer tunnel for 1 electronic safety transformer up to 150 VA SELV, slim or rounded shape (e.g. PC mouse shape) with thermal separation from luminaire installation space
- NYM cables can be inserted into the transformer section
- saves time - no plastering; close joint gap if necessary
- Exit opening up to max. Ø 140 mm possible, for full tolerance compensation when installing slab ceiling elements up to Ø 100 mm
  
- **Length:** 226 mm
- **Width:** 226 mm
- **Depth:** 133 mm
- **Length of transformer:** 235 mm
- **Width of transformer:** 85 mm
- **Depth of transformer tunnel:** 70 mm
- **Ceiling exit (CE) Ø:** ≤ 100 mm
- **M20/M25 impact couplings:** 4
- **max. installation height for low-voltage luminaires:** 105 mm
- **max. installation height for high-voltage luminaires:** 110 mm

## **Art. No.: 1291-23**

- **Inner packaging:** ST
- **Outer packaging:** 10 ST
- **Individual net weight:** 900,000 G
- **Single volume:** 7,944 L
- **EAN:** 4013456258419
- **ETIM40:** **EC000414**