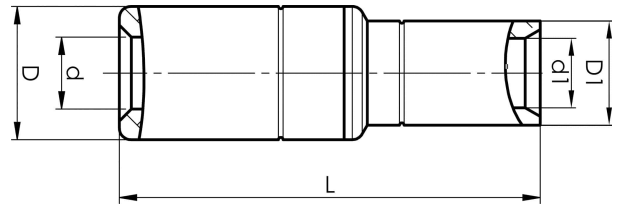


Aluminium-copper through connectors 16 - 500
mm²

AKS185-120



- Connector from Al conductor to Cu conductor.
- Stranded/solid Al conductors, stranded/multi-stranded Cu conductors.
- For multi-stranded Cu conductors, contact crimping using the Dual system is recommended.
- Two crimps are required for Al, normally one for Cu.

AlCu through connector, from Al conductor to Cu conductor. For stranded Al cable 185 mm², or for solid Al cable 240 mm², to stranded/multi-stranded Cu cable 120 mm². When crimping the Cu section, place the dies between the mark on the sleeve and the edge of the Cu section. Used with Elpress certified systems V1300, V250.



Item number: **7333-402700**
EAN: **7393487009943**

s1 (mm): **35**
d (mm): **17.6**
D (mm): **32**
L (mm): **104**
d1 (mm): **17**
D1 (mm): **22**
s (mm) - strip length: **61**

AWG/MCM Stranded Al: **350 MCM**
AWG/MCM Solid Al: **500**
AWG/MCM Cu: **250 MCM**
mm² Stranded Al: **185**
mm² Solid Al: **240**
mm² Cu: **120**