

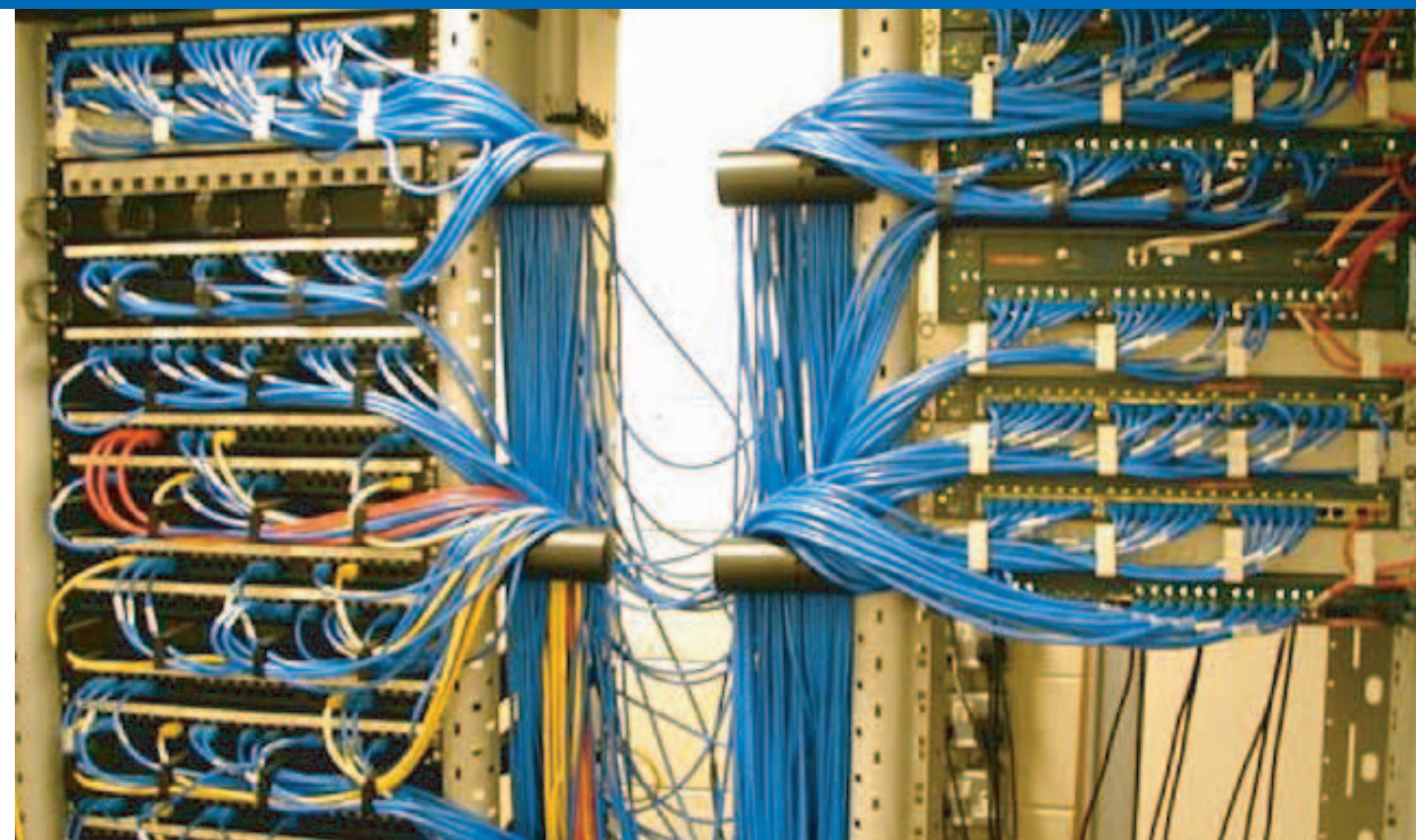


CAT6Plus System



CAT6Plus System

Brand-Rex



Brand Rex introduces it's New *CAT6Plus* Cabling Solution, designed to deliver an optimum performance cabling system. All products in the *CAT6Plus* system have 3rd party approval* and therefore either meet or exceed relevant standards.

- The Brand-Rex Millennium *CAT6Plus* Patch Panel is an enhanced, high performance patch panel available in both screened and unscreened models offering 16 or 24 port options.
- *CAT6Plus* copper cable range including UTP selections of CAT6550 giving headroom power sum channel ACR margins at standard maximum frequencies = 30dB @ 100MHz and 20dB @ 250MHz (cross filler design) or CAT6250 giving headroom power sum channel ACR margins at standard maximum frequencies = 30dB @ 100MHz and 20dB @ 250MHz (non-filler design) types with PVC or Halogen-free options.
- *CAT6Plus* patchcords supplied with boots and ID tags and designed to deliver optimum performance.
- *CAT6Plus* accessories to provide a comprehensive Category 6 compliant solution: low profile jacks, frames, face plates, back boxes, shuttered module, blanks and LJU6C floorbox modules.

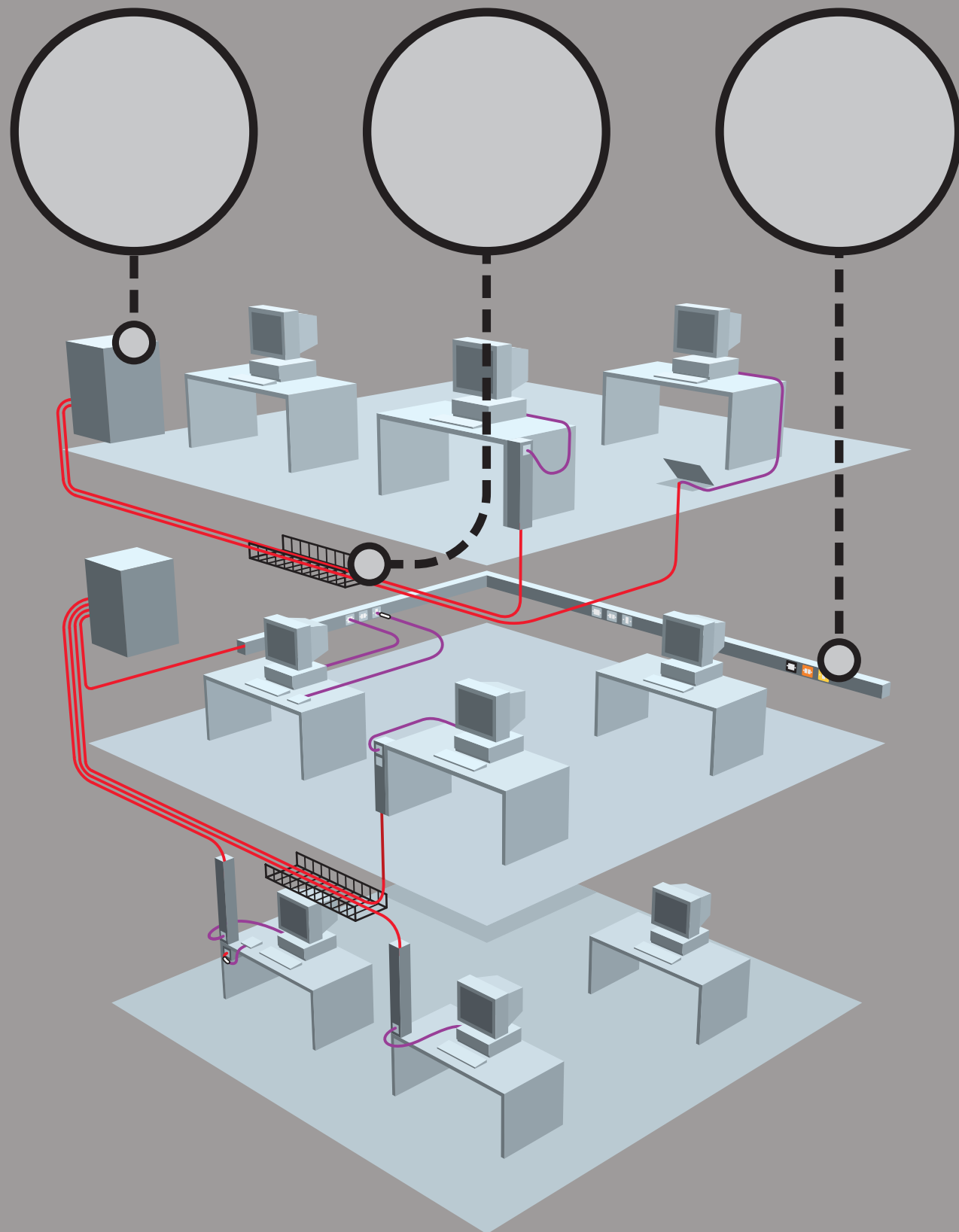
Brand-Rex Limited

Viewfield Industrial Estate Glenrothes Fife KY6 2RS United Kingdom		Tel +44 (0) 1592 772124
E-mail sales@brand-rex.co.uk	Website www.brand-rex.co.uk	Fax +44 (0) 1592 775314
Registered Office: Novar House 24 Queens Road Weybridge Surrey KT13 9UX Registered No. 189291		Literature Ref: CAT6 02.03



Novar Intelligent Building Systems offers a uniquely comprehensive range of solutions for specifiers and installers of fire, security, building management, datacoms and electrical installation products and is equipped to provide a single source solution for all your requirements.

CAT6Plus System



CAT6Plus System

The Millennium 25 year system performance warranty

Brand-Rex has an established network of resellers, distributors and installers all trained to the highest standard by Brand-Rex.

Installers seeking appointment as approved "Millennium Channel Partners" undergo training at Brand-Rex's dedicated Engineering Education centre at Helsby, Cheshire, to ensure installation excellence.

Millennium Cabling Systems installed by approved "Millennium Channel Partners" carry a 25 year system warranty.

Cabling standards continually evolve and are updated to account for the ever advancing requirements of new LANs.

The electrical requirement of high speed LANs such as 1/10-Gigabit Ethernet and ATM have to be considered to provide a margin of security.



PROTOCOL LIST			
10/100/1000 Gb/s Ethernet Copper	100/1000/10000 Gb/s Ethernet Fibre	Video Process control	ATM 155, 622 Mb/s 1.2 and 2.5 Gb/s
4, 16, 100 + 1000 Mb/s Token Ring	FDDI/ TP-PMD 100 Mb/s	IBM 3270 AS400	Voice Process control



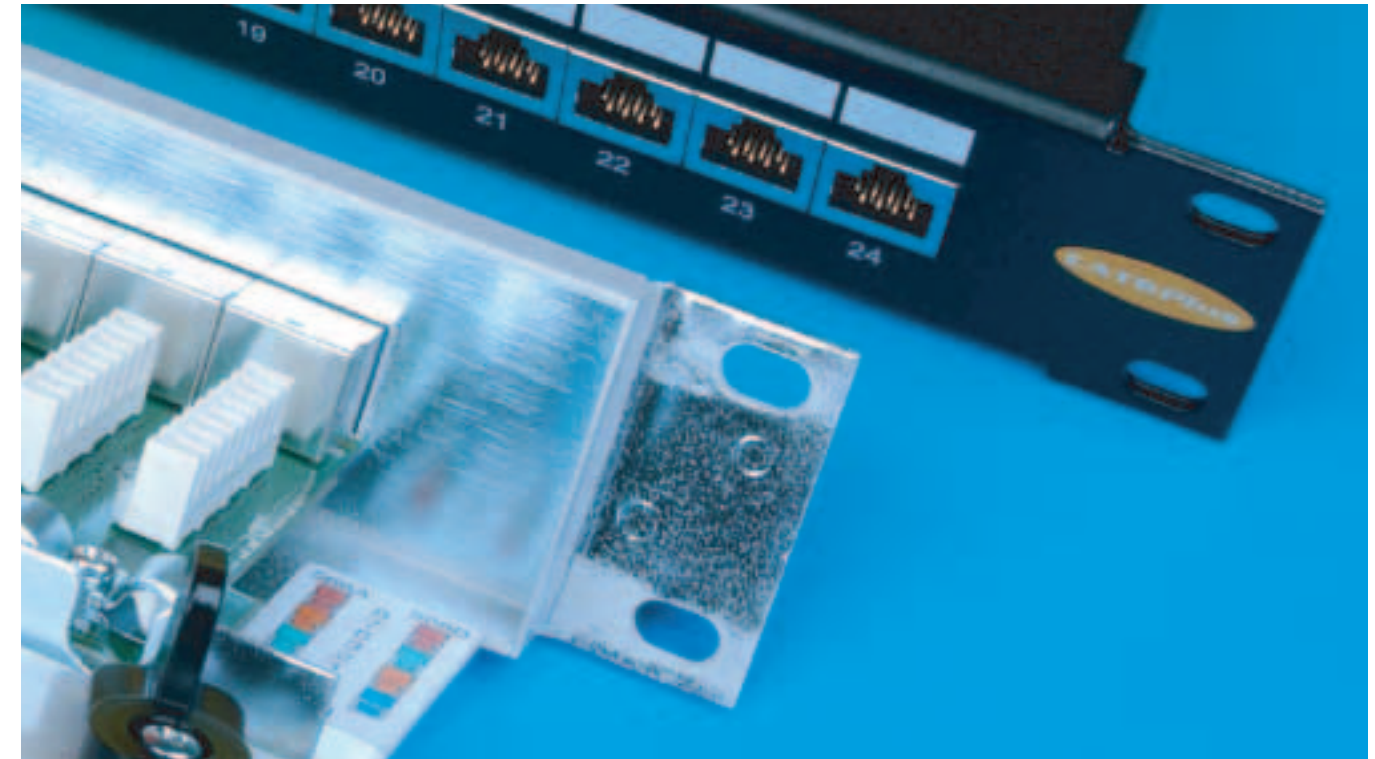
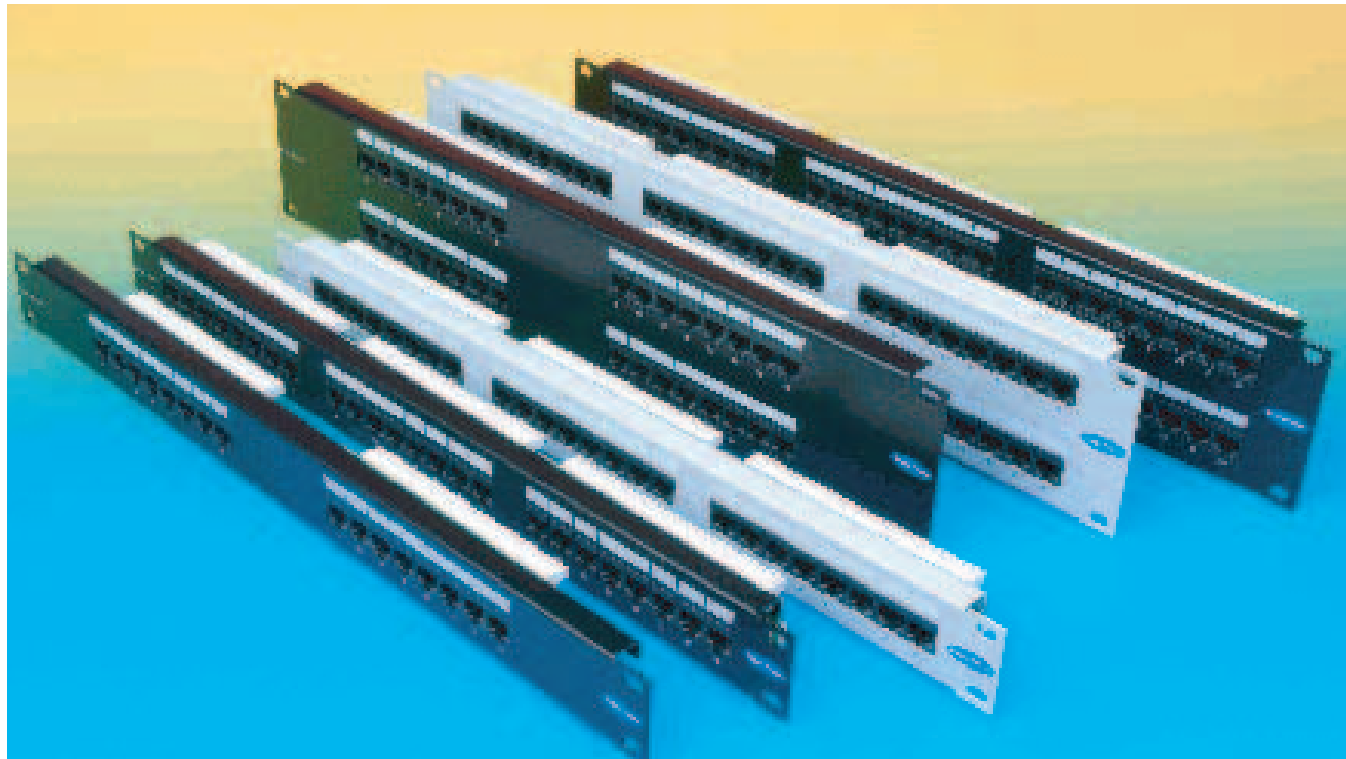
25 Year Warranty - Guaranteed Quality - Guaranteed Performance

- End to End Warranty
- Lifetime application warranty
- Exceeds all the latest published and draft standards
- Extended distance operation on copper and fibre
- Full cost of replacement*
- Compliance to European EMC/EMI Specification
- Guaranteed for Gigabit Ethernet, Both in the backbone and to the desk.
- Suitable for all protocols listed above
- 50/125, 62.5/125 and/or singlemode fibre options
- Screened and unshielded copper cable options
- Low flammability, zero halogen options
- Full range of network design, copper and optical training programs



CAT6Plus System

CAT6Plus System

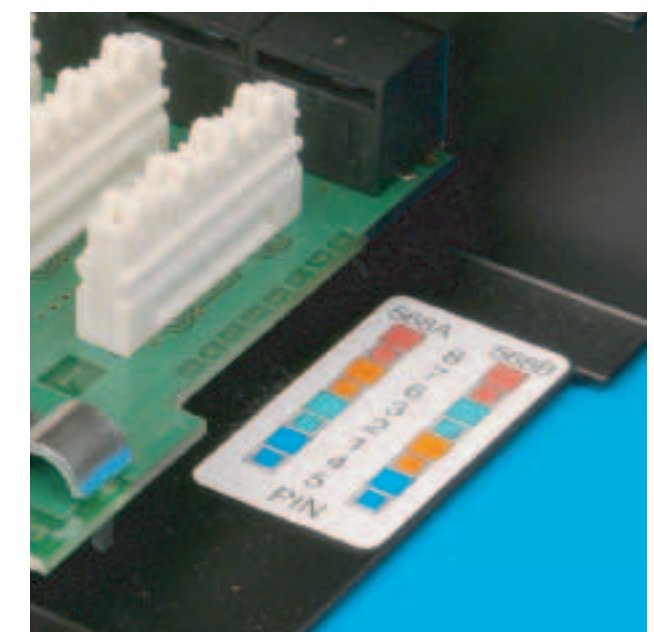


The New range of CAT6Plus patch panels from Brand-Rex are at the cutting edge of technology, they have been designed with ease-of-use in mind. The latch design has been improved and panel face fixing screws now offer protection to maintain the high quality aesthetic finish. A stepped PCB gives improved wiring label visibility and wide punch down blocks ease termination. Individual RJ45 sockets create greater space to receive larger booted patchcords .

- New patented contact array design ensures positive connectivity and high performance.
- True Category 6 compliance and positive dB headroom.
- Improved latch design and fixing screw grommets secures panel assembly.
- Easy access for speedy installation with aesthetic looks maintained over time and provides quick access whilst protecting external finish.
- Increased pitch on IDCs and individual RJ45 sockets to give increased spacing Punch down block termination and sockets provide system connections. More space for cable fitting and an ability to accept larger booted patchcords.
- Powder coat finish in Black or Grey provides decoration/protection of enclosure and a durable finish with attractive appeal.

UNSCREENED PANELS	
LIST NUMBER	DESCRIPTION
C6C-PNL-U-16-01-2M	16 way unscreened Panel, 110 style, Black
C6C-PNL-U-16-0K-2M	16 way unscreened Panel, LSA style, Black
C6C-PNL-U-16-0K-8M	16 way unscreened Panel, LSA style, Grey
C6C-PNL-U-24-0K-2M	24 way unscreened Panel, LSA style, Black
C6C-PNL-U-24-0K-8M	24 way unscreened Panel, LSA style, Grey
C6C-PNL-U-16-01-8M	16 way unscreened Panel, 110 style, Grey
C6C-PNL-U-24-01-2M	24 way unscreened Panel, 110 style, Black
C6C-PNL-U-24-01-8M	24 way unscreened Panel, 110 style, Grey

SCREENED PANELS	
LIST NUMBER	DESCRIPTION
C6C-PNL-F-16-01-2M	16 way screened Panel, 110 style, Black
C6C-PNL-F-16-0K-2M	16 way screened Panel, LSA style, Black
C6C-PNL-F-24-01-2M	24 way screened Panel, 110 style, Black
C6C-PNL-F-24-0K-2M	24 way screened Panel, LSA style, Black



CAT6Plus System

CAT6Plus System



Picture of UTP250	Picture of UTP250	Picture of FTP550
Picture of FTP250	Picture of UTP550	Picture of UTP550 HF1

The new CAT6Plus copper cable range of screened and unscreened cables have outstanding electrical characteristics and offer a robust platform for demanding high bandwidth applications, options are available in PVC and Halogen-free.

- Halogen-free cable types can be selected from the UTP range to meet the requirements of IEC 60332-1 or IEC 60332-3.
- The classic Millennium cable with cross filler +PSACR @ 550MHz for true future proofing of cabling infrastructure.
- The new unscreened cable option without cross-filler +PASCRA @ 250MHz delivers high bandwidth performance to meet application needs and gives a value-for-money cabling solution which still ensures Category 6 performance.*
- 3rd Party approved (3P).**

UNSCREENED PANELS	
LIST NUMBER	DESCRIPTION
C6U-250	Cat 6 UTP PVC 250MHz
C6U-250-HF1	Cat 6 UTP Halogen Free (IEC 60332-1) 250MHz
C6U-250-HF3	Cat 6 UTP Halogen Free (IEC 60332-3) 250MHz
C6U-550	Cat 6 UTP PVC 550MHz
C6U-550-HF1	Cat 6 UTP Halogen Free (IEC 60332-1) 550MHz
C6U-550-HF3	Cat 6 UTP Halogen Free (IEC 60332-3) 550MHz

SCREENED PANELS	
LIST NUMBER	DESCRIPTION
C6F-550	Cat 6 STP PVC 550MHz
C6F-550-HF1	Cat 6 STP Halogen Free (IEC 60332-1) 550MHz

CAT6PLUS PERFORMANCE CHART				
	CAT6plus 250 Worst Pair Margin		CAT6plus 550 Worst Pair Margin	
	guaranteed	typical	DESCRIPTION	typical
Insertion loss	5.0%	6.5%	7.5%	9.0%
Pr-Pr NEXT	6.0dB	9.4dB	7.0dB	10.9dB
PSNEXT	7.5dB	10.6dB	8.5dB	12.0 dB
Pr-Pr ELFEXT	6.0dB	11.3dB	8.0dB	11.5dB
PSELFEXT	8.0dB	12.7dB	10.0dB	13.2dB
Return Loss	4.0dB	5.7dB	4.0dB	6.1dB

(* CAT 6 performance can only be achieved when installed in conjunction with New Millennium 2003 products from Brand-Rex)

(**Link and channel pending)

CAT6Plus System



Brand-Rex CAT6Plus Patch Cords have been designed to provide optimum performance for the CAT6Plus cabling system. The Brand-Rex CAT6Plus Patch Cords offer Category 6 compliance.

CAT6Plus System

LIST NUMBER	DESCRIPTION
MMC-WDO-UNI-062	25 x 50mm Shuttered Module White

LIST NUMBER	DESCRIPTION
MMC-WDO-UNI-040	50 x 50mm Blank White
MMC-WDO-UNI-042	25 x 50mm Blank White
MMC-WDO-UNI-052	12.5 x 50mm Blank White

LIST NUMBER	DESCRIPTION
MMC-WDO-UNI-070	86 x 86mm Single Gang 1 Port Shuttered Faceplate White
MMC-WDO-UNI-071	86 x 147mm Double Gang 2 Port Shuttered Faceplate White

LIST NUMBER	DESCRIPTION
MMC-WDO-06C-001	38 x 25mm Shuttered Module White
MMC-BLK-06C-001	38 x 25mm Blank White
	Designed for standard floor box 37 x 22mm cut-out

LIST NUMBER	DESCRIPTION
Snap in Jacks	Information needed

ORDERING INFORMATION			
Example: C6C-PC-U-101-888-H			
CABLE CATEGORY		LENGTH (Standard)	
C6C	Category 6	101	010 020
ITEM DESCRIPTION		CORD COLOURS	
PC	Patch Cord	888	1st = Cable 1 = Red 2nd = Boot 1 4 = Blue 3rd = Boot 2 5 = Green 6 = Yellow 8 = Grey
CORD TYPE		SPECIALITY TAGS	
U	U = 24AWG UTP S = 27AWG STP	H	S = Solid X = Crossover H = Halogen Free If no tag = Standard

CAT6Plus System

Ackerman Spider information to go here.

Need to know what to include.

CAT6Plus System

Ackerman Spider information to go here.

Need to know what to include.

CAT6Plus System

Technical Information.

- Line drawings
- Selection charts

Information needed.

CAT6Plus System

Technical Information.

- Line drawings
- Selection charts

Information needed.

CAT6Plus System

Technical Information.

- Line drawings
- Selection charts

Information needed.

CAT6Plus System

Technical Information.

- Line drawings
- Selection charts

Information needed.