

Data Sheet | Item Number: 285-1171

Jumper; insulated; gray

<https://www.wago.com/285-1171>



Color: ■ gray

Electrical data

Ratings per IEC/EN

Rated current	309 A
---------------	-------

Physical data

Jumper assignment	1-2
-------------------	-----

Material data

Note (material data)

[Information on material specifications can be found here](#)

Color	gray
Fire load	0 MJ
Weight	97 g

Commercial data

Product Group	1 (Rail Mounted Terminal Blocks)
eCl@ss 10.0	27-14-11-40
eCl@ss 9.0	27-14-11-40
ETIM 8.0	EC000489
ETIM 7.0	EC000489
PU (SPU)	25 (5) pcs
Packaging type	Box
Country of origin	DE
GTIN	4055143067003
Customs tariff number	85366990990

Environmental Product Compliance

RoHS Compliance Status	Compliant, No Exemption
------------------------	-------------------------

Approvals / Certificates

General approvals			Approvals for hazardous areas		
Approval	Standard	Certificate Name	Approval	Standard	Certificate Name
CSA DEKRA Certification B.V.	C22.2	154112	AEx Underwriters Laboratories Inc.	UL 60079	E185892 (AEx eb II C resp. Ex eb II C)

Downloads

Environmental Product Compliance	
Compliance Search	
Environmental Product Compliance 285-1171	↓

Documentation

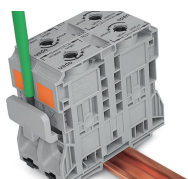
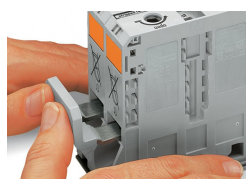
Bid Text			
285-1171	19.02.2019	xml 2.56 KB	↓
285-1171	04.01.2018	doc 22.50 KB	↓

CAD/CAE-Data

CAD data		CAE data	
2D/3D Models 285-1171	↓	EPLAN Data Portal 285-1171	↓
		ZUKEN Portal 285-1171	↓

Installation Notes

Commoning



Commoning with an adjacent jumper: insert the jumper above the conductor entry hole – prior to conductor termination. The nominal cross-section remains unchanged.

Removing jumper via operating tool.

Subject to changes. Please also observe the further product documentation!

Current addresses can be found at: www.wago.com