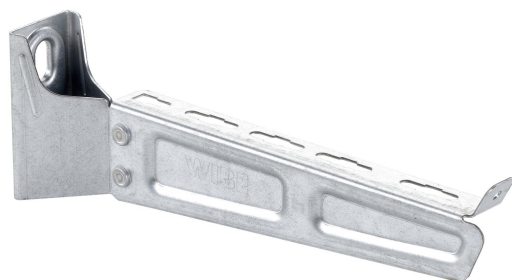


Cantilever arm 50i-100 PG

Reference 791412



Activity
Product family
Brand

Cable support systems
Support system
Wibe

Commercial and Web

Short description	Cantilever arm 50i-100 PG
Medium description	Wibe - cantilever arm 50i-100 mm - steel pre-galvanized
Keyword	791412, Wibe Cable Trays
Width	100
Material	Steel
Material type or surface treatment	Pre-galvanized
Corrosion class	C1; C2

Base

Activity	Cable support systems
Product family	Support system
Brand	Wibe
GTIN	7321677914128

ETIM (EC000022-Bracket for cable support system)

Length (EF001438)	* mm
Width (EF000008)	43 mm
Height (EF000040)	80 mm
Suitable for cable management system width (EF008339)	500-600 mm
Model (EF000010)	Wall- and profile console
Angle (EF005434)	90-90 ° °
Load bearing capacity (EF002918)	* kN
Suitable for circuit integrity	No

(EF007806)	
Material (EF002169)	Steel
Material quality (EF001257)	*
Surface protection (EF000139)	Continuously galvanized
Colour (EF000007)	*
RAL (EF000116)	*

Logistic

Pack 1 type	Each
Quantity pack 1	1
Weight pack 1	0.19
Length pack 1	159
Width pack 1	43
Height pack 1	80
GTIN pack 1	7321677914128
Pack 4 type	Pallet
Quantity pack 4	700
Weight pack 4	170
Length pack 4	1200
Width pack 4	800
Height pack 4	530
Customs code	73089059
Country of origin	SE

Certification

ETIM class	EC000022
REACH declaration	No
REACH date	3/7/2021 11:00:00 PM +00:00

Status product

Product status	Commercialized
----------------	----------------

For the latest information check <http://wibe-group.com/cable-support-systems/cantilever-arm-50i-100-pre-galv>