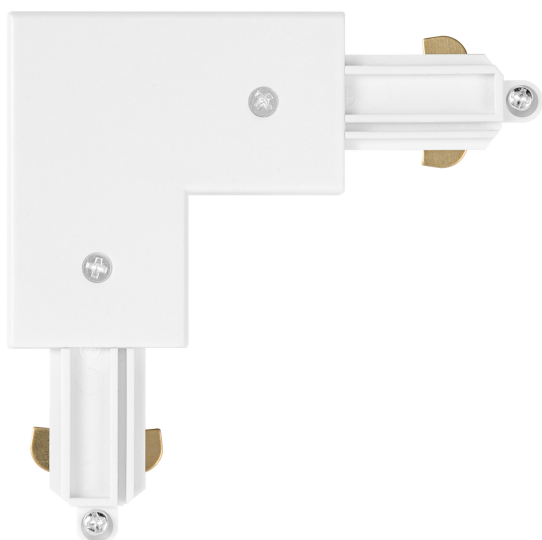


PRODUCT DATASHEET

Tracklight Corner Connector White

Tracklight accessories | Tracklight accessories



Areas of application

- Kitchens, living rooms, children's rooms or home offices
- Entrance areas

Product benefits

- Timeless elegant design
- High-quality materials

Product features

- Customisable modular tracklight system
- Accessories for tracklight system



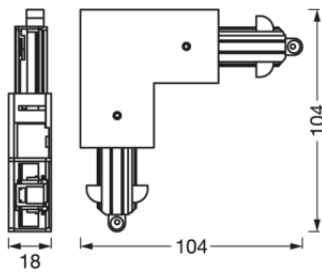
TECHNICAL DATA

Electrical data

Nominal voltage	220...240 V
Mains frequency	50/60 Hz
Protection class	I

Dimensions & Weight

Length	104.0 mm
Width	104.0 mm
Height	18.0 mm
Product weight	60.00 g



TRACKLIGHT CORNER
CONNECTOR WT

Materials & Colors

Product color	White
Body material	Aluminum/Plastic

Application & Mounting

Ambient temperature range	-20...+40 °C
Type of protection	IP20
Replaceable light source	No




Certificates & Standards

Standards	CE / UKCA
Ball shot safe	No

Safety advice

- All electrical connections must be made by a qualified person.
- Caution, risk of electric shock.
- Product in protection class I. All electrically conductive, metallic housing parts that can absorb voltage during operation or during maintenance in the event of a fault must be continuously connected to the protective earthing conductor.
- Check wall-ceiling for suitability. If uncertain, seek professional advice.

DOWNLOAD DATA

	Documents and certificates	Document name
	User instruction / safety instructions	TRACKLIGHT CORNER CONNECTOR
	Declarations of conformity	TRACKLIGHT
	Declarations of conformity UKCA	TRACKLIGHT ACCESSORIES

LOGISTICAL DATA

Product code	Packaging unit (Pieces/Unit)	Dimensions (length x width x height)	Gross weight	Volume
4058075764040	BAG 1	20 mm x 170 mm x 200 mm	68.00 g	0.68 dm ³
4058075764057	Shipping box 50	377 mm x 202 mm x 215 mm	3741.00 g	16.37 dm ³
4099854114205	Shipping box 8	180 mm x 120 mm x 175 mm	639.00 g	3.78 dm ³

The mentioned product code describes the smallest quantity unit which can be ordered. One shipping unit can contain one or more single products. When placing an order, for the quantity please enter single or multiples of a shipping unit.

DISCLAIMER

Subject to change without notice. Errors and omission excepted. Always make sure to use the most recent release.