

Wall mounted socket

Part no. 21468

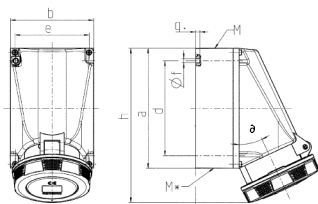


- screw terminals
- X-CONTACT®
- with highly heat resistant contact carrier
- nickel plated contacts
- products with pilot contact: part no. + index P

Technical specifications

Ampere	125 A
Poles	5 p
Voltage	400 V
Clock position	6 h
Hertz	50-60 Hz
Connection technology	Screw terminals
Contact	highly heat resistant contact carrier, nickel plated contacts, X-CONTACT
Protection type	IP67
Weight	2131 g

Drawing



Drawing 1 MB 112/162	Amp. Poles	63			125	
		3	4	5	4	5
Dim. in mm	a	170	170	170	264	264
	b	118	118	118	163	163
	c	175	175	175	200	200
	d	134.5	134.5	134.5	240	240
	e	103	103	103	140	140
	f	6.1	6.1	6.1	8.1	8.1
	g	6	6	6	8	8
	h	219	219	219	306	306
	M	40	40	40	50	50
	M*	2x40 (blind) to be cut out			50	50
	ø	25	25	25	20	20
	Max. cable diam. (mm)	27	27	27	38	38
	Terminal for cond. cross section (mm ²) min.-max.	6	6	6	25	25
		-25	-25	-25	-35	-35